

Precast Concrete Restrooms

Blue Ridge[®]



Engineered Designs

Economical

- No Foundation Required
- Lower Installation Costs
- ADA Compliant
- Lifetime Roof Warranty
 - Lower Maintenance Costs
 - Weather-tight Construction
- Standard Roof Heights
- Meets All Current Building Codes
 - ANSI/ASCE 7-02 and IBC 2003
- Heavy Duty Walls and Floors

Secure

- Vandal Resistant: Steel-reinforced precast concrete construction, tamper-proof hinges, dead-bolt locking systems and 18-gauge galvanized steel insulated doors.

Durable

- Rugged: Patented post-tensioned technology withstands all weather, temperature, impact and seismic requirements.
- Weather-tight: Roof and Floor design provides industry leading water-tight construction.
- Maintenance Free: Will not rust, warp, corrode, rot, or burn while retaining exterior appearance without any additional maintenance.

Practical

- Prefabricated: Tightly controlled manufacturing standards, Transported to site preassembled.
- Maintains structural integrity during shipping and installation using proven precast technology
- Simple Installations: Usually completed in only 1 day
- No Foundations Required: Just a simple level, compacted crushed stone base
- Protected against freeze-thaw cycles

Finishes



EASI-BRICK™



Exposed Aggregate



Split Block



Barnboard



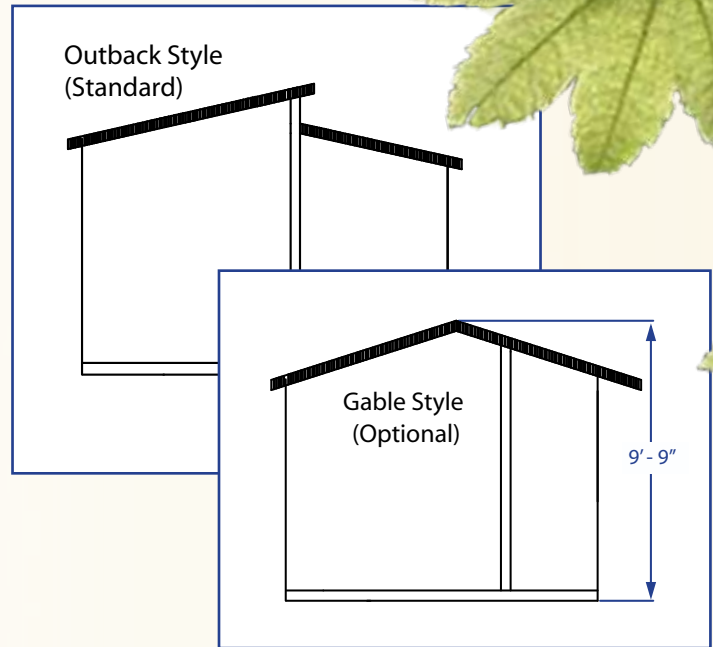
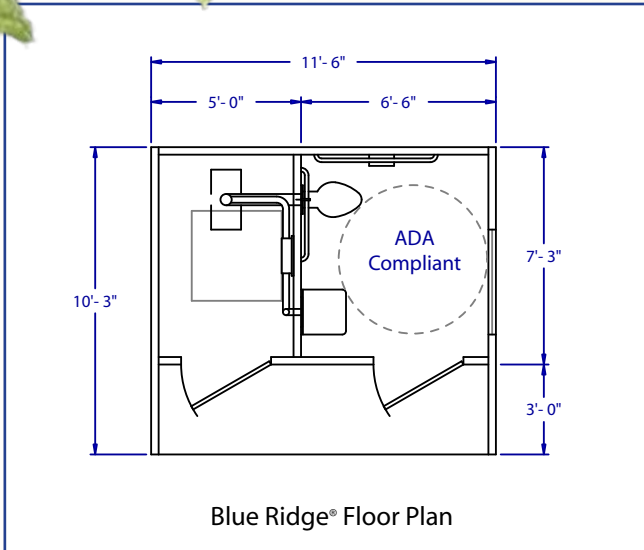
Broom



Skip-trowel

**EASI
SET[®]**

Blue Ridge®

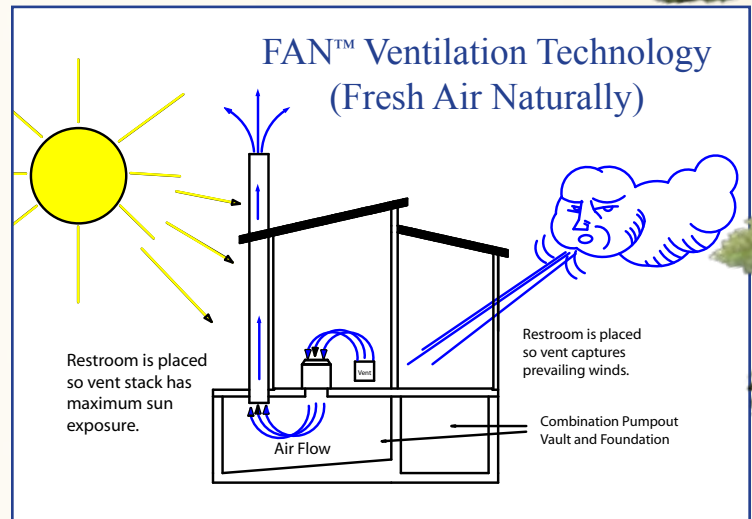


Specifications

- Meets IBC-2003, ANSI/ASCE 7-02, ACI 318-02, LRFD AISC 3rd edition, ASD AISC 9th edition, CSI Manual of Standard Practices, PCI Design Handbook 9th edition requirements.
- Roof load capacity: 350 psf (standard building: 250 psf)
- Wind load: 130 mph (standard building)
- Floor load: 250 psf
- 5000 psi steel-reinforced precast panels with welded connections. (standard building: bolted connections)
- Bullet tested to UL-752, Level 4
- 18-gauge galvanized steel insulated doors, tamper-proof hinges, dead-bolt lock, door stop and holder.
- Lifetime roof: post-tensioned by a single continuous tendon creating radial compression in the roof. No coating required.
- Wet/Dry: can be connected to city water and/or sewer or be self-contained.
- FAN™ (Fresh Air Naturally) Ventilation Technology eliminates restroom odors. (Dry hookups only)
- Meets and exceeds US Forest Service Specifications.

Outfitting

Dry



Manufactured Locally By:

Available throughout North America from Licensees of EASI-SET® INDUSTRIES



PO Box 400 • 5119 Catlett Rd, Midland, VA 22728
800-547-4045 • 540-439-8911 • fax: 540-439-1232
www.easiset.com • info@easiset.com

EASI-SET® Industries is a licensor of precast concrete products worldwide, and a wholly owned subsidiary of SMITH-MIDLAND Corporation, a publicly traded company. Copyright 2006 by EASI-SET® Industries. All rights reserved. Printed in USA.

Wet

Murdock Super Secure Fixtures in 304 Stainless Steel:

- Model 1001-R, Toilets with flush valves, hinged seats & waste connections
- Model 1011-1, Lavatories with Cold Only air control metering valves and waste connections
- Model 1104, ADA mirrors
- Model 1133, 36 inch grab bars
- Model 1134, 8 inch grab bars
- Model 113-PL, Tissue dispensers with brass padlocks
- Model 1142, Chrome plated hose valves with vacuum breakers
- Model 1107, Entrance signs with braille