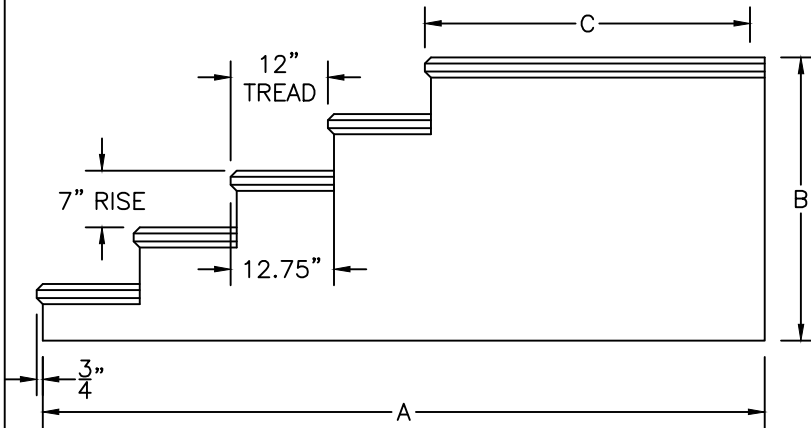
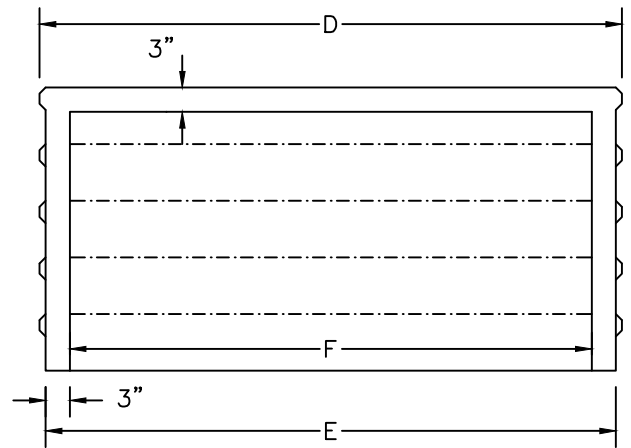


WEIGHT	RISERS						
	1	2	3	4	5	6	7
4'	655#	1,050#	1,490#	1,975#	2,500#	3,070#	
5'	795#	1,240#	1,730#	2,260#	2,835#	3,450#	4,110#
6'	940#	1,430#	1,965#	2,545#	3,170#	3,830#	4,540#
7'	1,055#	1,600#	2,190#	2,820#	3,500#	4,220#	4,990#



SIDE VIEW



END VIEW

RISER	A NO PLAT	A 42" PLAT	B HEIGHT
1	12"	41 1/4"	7"
2	24"	53 1/4"	14"
3	36"	65 1/4"	21"
4	48"	77 1/4"	28"
5	60"	89 1/4"	35"
6	72"	101 1/4"	42"
7*	84"	113 1/4"	49"

D WIDTH	E OUTSIDE CORE WIDTH	F INSIDE CORE WIDTH	C PLATFORM LENGTH
4'	47"	42"	42"
5'	59"	53 1/2"	42"
6'	71"	65 1/2"	42"
7'	82"	78"	42"

*7 RISERS NOT AVAILABLE IN 4' WIDE

NOTES:

1. CONCRETE: 4,000 PSI MINIMUM AFTER 28 DAYS.
2. LOAD RATING: 300psf
3. REINFORCEMENT #3 GRADE 60.
4. WROUGHT IRON RAILS OPTIONAL.
5. TREADS AND PLATFORM BROOM FINISHED.