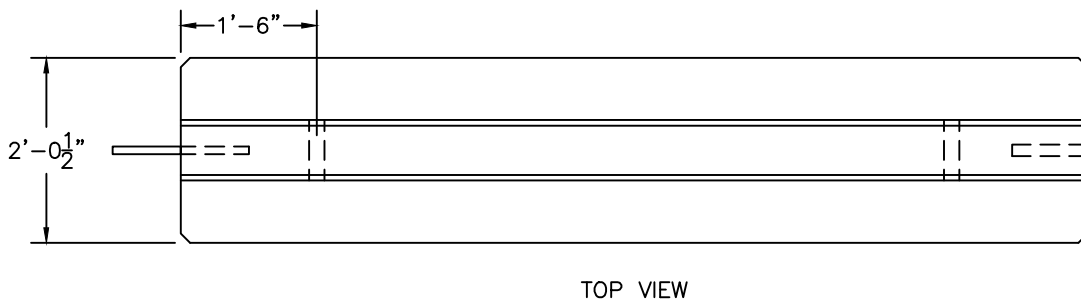
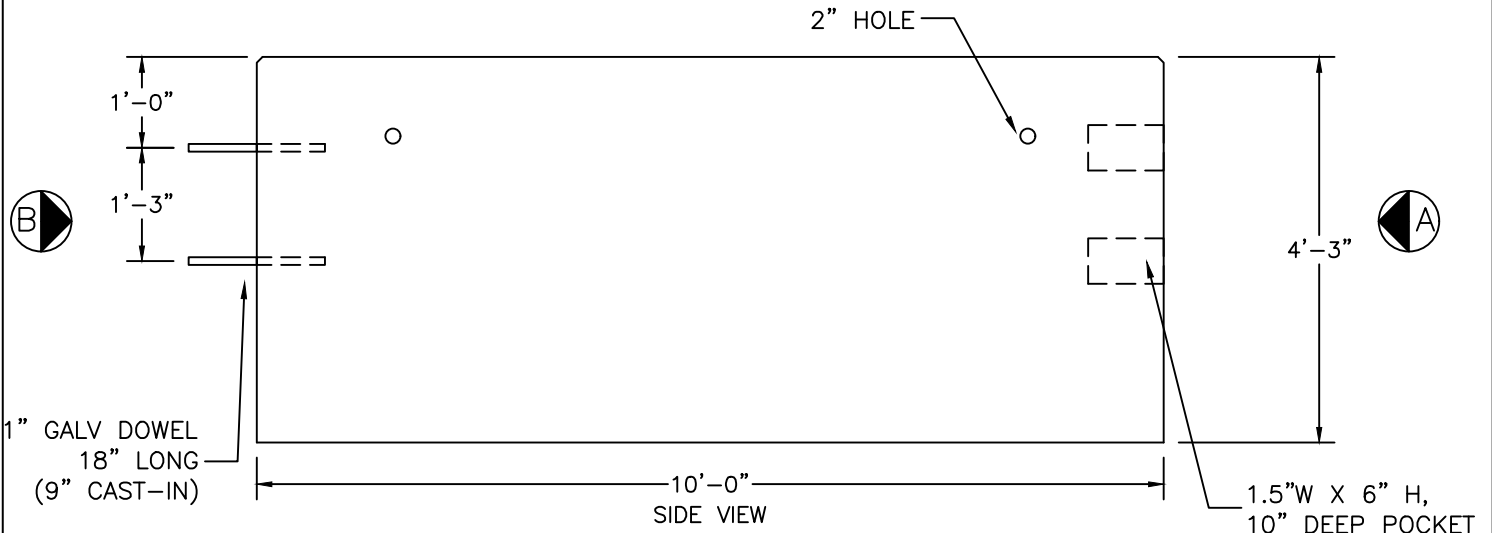
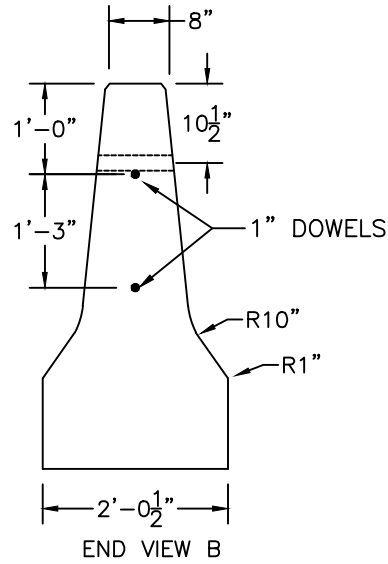
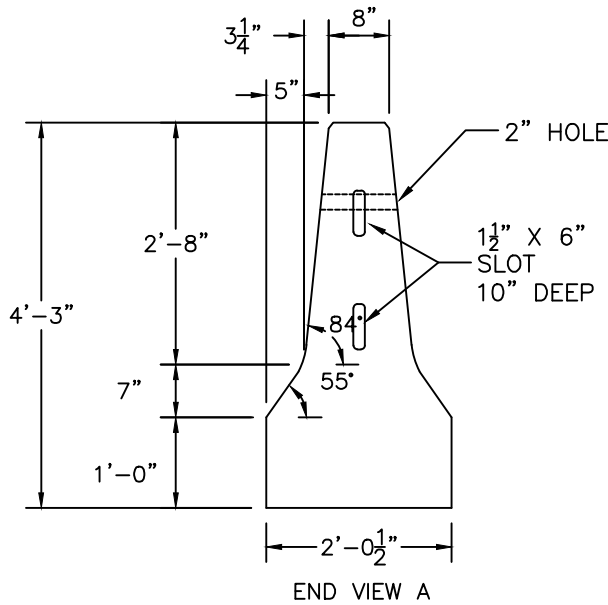


MEDIAN BARRIER F SHAPE
51" TALL-SYMMETRICAL



NOTES:

1. CONCRETE: 5,000 PSI MINIMUM AFTER 28 DAYS.
2. FOR DOWEL CONNECTION REFER TO MADOT E 402.13.0
3. FOR REINFORCING SEE MADOT E 402.11.0 FOR SYMMETRICAL SHAPE.

SHEA PRODUCT ID:
MBTFDF10-51

PREPARED FOR:

FILE NAME:
medbar Symmetrical Tall.dwg

WEIGHT (LBS):
8,000#

DRAWN BY: ARO

DATE: 03/01/2018

PAGE: J4.8-2

