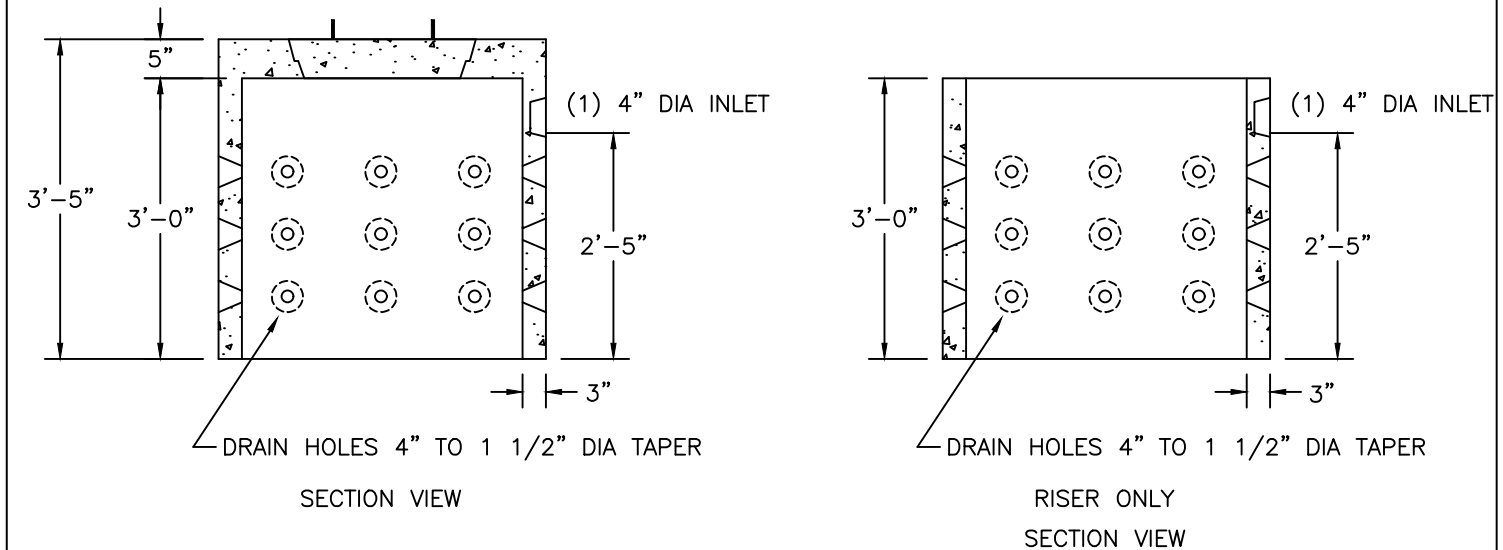
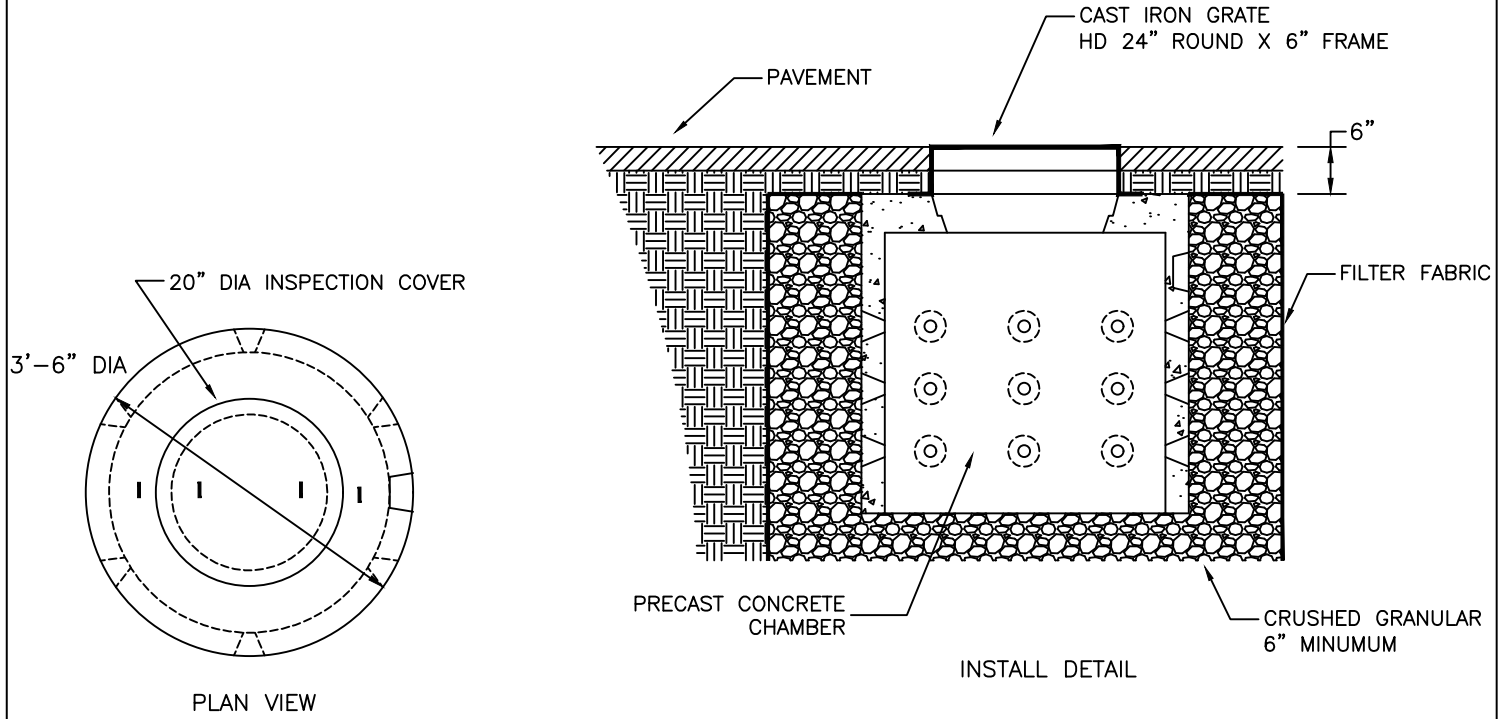


MINI-DRY WELL
160 GALLONS



- NOTES:
1. CONCRETE: 4,000 PSI MINIMUM AFTER 28 DAYS.
 2. DESIGNED FOR AASHTO HS-20 LOADING, 1 TO 5 FT COVER.
 3. CAPACITY INCREASES IN INCREMENTS OF 160 GALLONS FOR EVERY 3' SECTION ADDED.
 4. BOTTOM PLATES AVAILABLE.

ITEM NO.	DESCRIPTION	WEIGHT
MDWH	3' SECTION W/COVER (ONE PIECE)	1,404#
MDWHNC	3' SECTION NO COVER	1,048#

