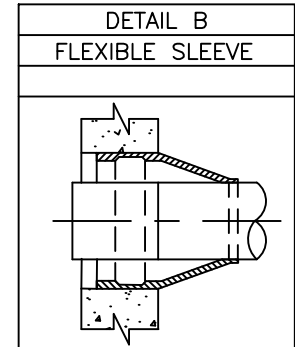
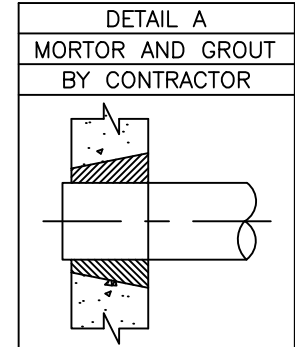
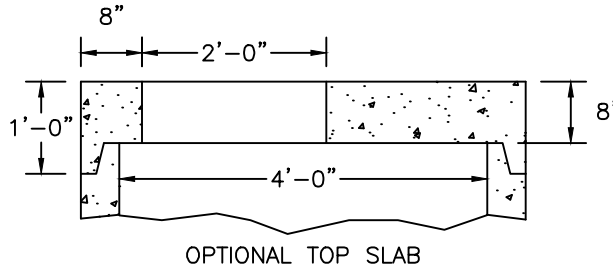


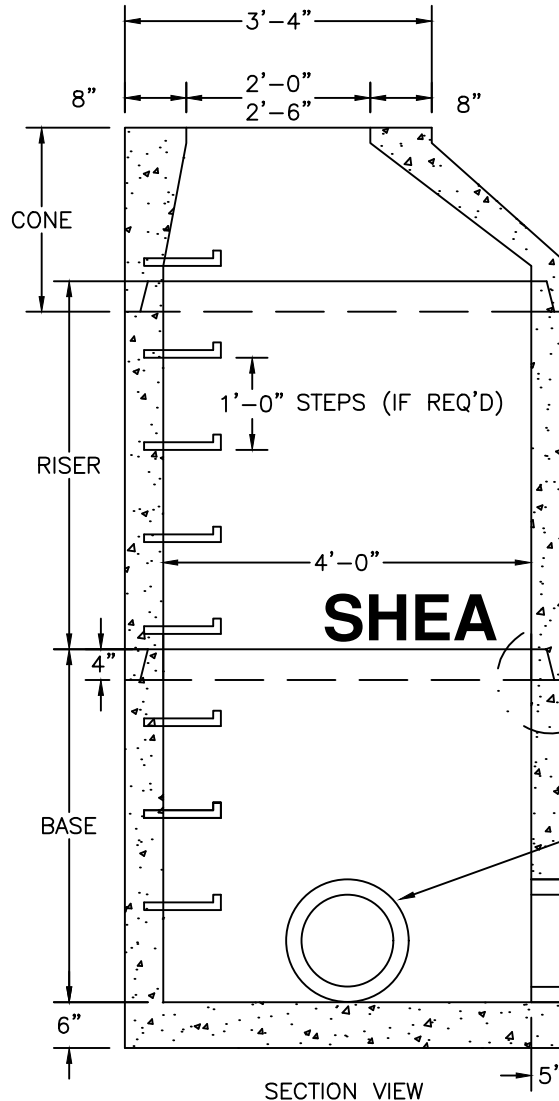
FLAT TOP

	ITEM NO	WEIGHT
1 HOLE	MH4-FT4ID	1,620#
2 HOLE	MH4-FT4ID2H	930#



ECCENTRIC CONE

HEIGHT	ITEM NO	WEIGHT
1'-6"	MH4-18C4ID	1,335#
2'-0"	MH4-24C4ID	1,783#
2'-6"	MH4-30C4ID	2,231#
3'-0"	MH4-36C4ID	2,677#
4'-0"	MH4-48C4ID	3,425#



RISER SECTION

HEIGHT	ITEM NO	WEIGHT
1'-0"	MH4-12CS4ID	856#
2'-0"	MH4-24CS4ID	1,712#
2'-6"	MH4-30CS4ID	2,140#
3'-0"	MH4-36CS4ID	2,568#
4'-0"	MH4-48CS4ID	3,424#
5'-0"	MH4-60CS4ID	4,280#

BASE SECTION

HEIGHT	ITEM NO	WEIGHT
2'-0"	MH4-24S4ID	2,640#
2'-6"	MH4-30S4ID	3,067#
3'-0"	MH4-36S4ID	3,495#
3'-6"	MH4-42S4ID	3,922#
4'-0"	MH4-48S4ID	4,350#
4'-6"	MH4-54S4ID	4,777#
5'-0"	MH4-60S4ID	5,205#
5'-6"	MH4-66S4ID	5,633#
6'-0"	MH4-72S4ID	6,060#

NOTES:

1. CONCRETE: 4,000 PSI MINIMUM AFTER 28 DAYS.
2. REINFORCED STEEL CONFORMS TO ASTM A185 SPEC. 0.12 SQ. IN./LINEAL FT. AND 0.12 SQ. IN. (BOTH WAYS) BASE BOTTOM.
3. DESIGN LOADING PER AASHTO HS-20, 1 TO 5 FEET COVER.
4. MANHOLE DESIGN SPECS CONFORM TO ASTM C478 SPEC FOR "PRECAST REINFORCED CONCRETE MANHOLE SECTIONS."
5. BUTYL RESIN SECTION JOINT CONFORMS TO ASTM C990 SPECIFICATION.
6. STEEL REINFORCED COPOLYMER POLYPROPYLENE PLASTIC STEP CONFORMS TO ASTM C478 SPEC.

SHEA PRODUCT ID: SEE TABLE	PREPARED FOR:	FILE NAME: dmh48in.dwg	
WEIGHT (LBS): SEE TABLE	DRAWN BY: ARO	DATE: 06/01/18	

773 Salem Street-Wilmington, MA | 153 Cranberry Hwy-Rochester, MA | 87 Haverhill Road-Amesbury, MA | 160 Old Turnpike Rd-Nottingham, NH