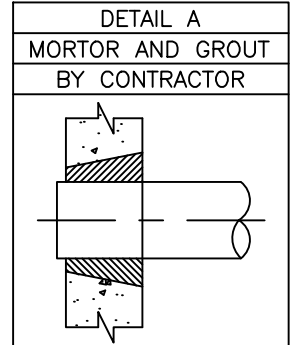
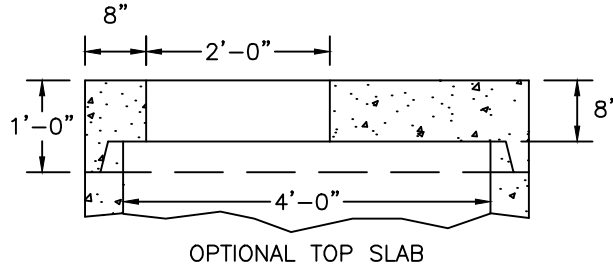


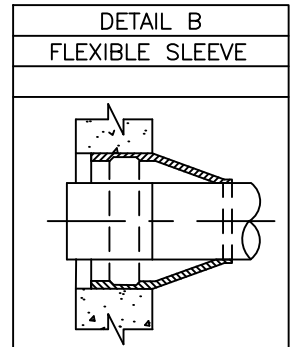
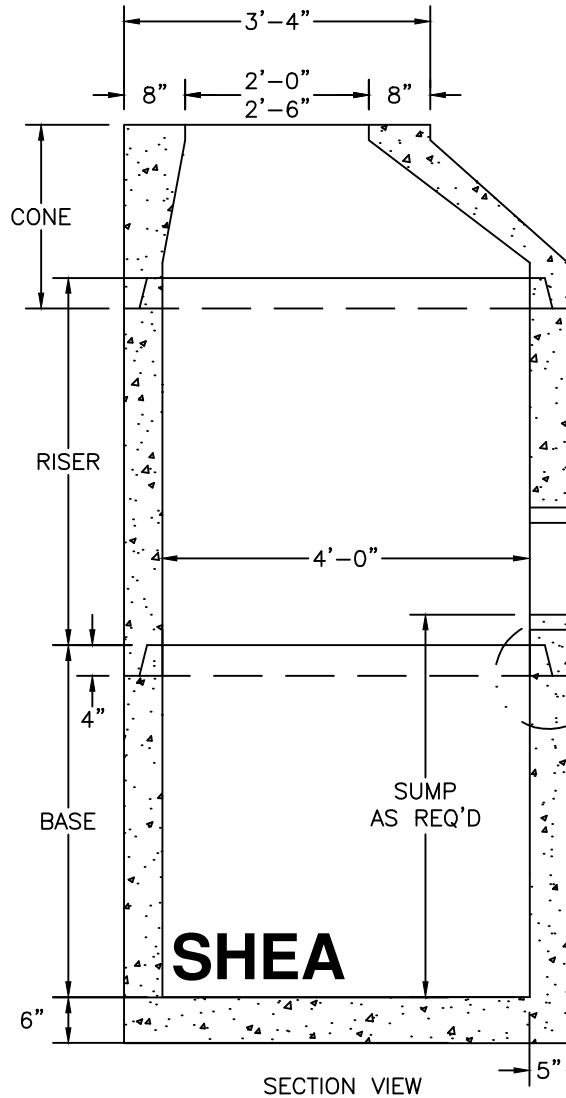
FLAT TOP

	ITEM NO	WEIGHT
1 HOLE	MH4-FT4ID	1,620#
2 HOLE	MH4-FT4ID2H	930#



ECCENTRIC CONE

HEIGHT	ITEM NO	WEIGHT
1'-6"	MH4-18C4ID	1,335#
2'-0"	MH4-24C4ID	1,783#
2'-6"	MH4-30C4ID	2,231#
3'-0"	MH4-36C4ID	2,677#
4'-0"	MH4-48C4ID	3,425#



PIPE CONNECTIONS
SEE DETAILS A AND B

BUTYL RESIN OR
MORTAR JOINT

RISER SECTION

HEIGHT	ITEM NO	WEIGHT
1'-0"	MH4-12CS4ID	856#
2'-0"	MH4-24CS4ID	1,712#
2'-6"	MH4-30CS4ID	2,140#
3'-0"	MH4-36CS4ID	2,568#
4'-0"	MH4-48CS4ID	3,424#
5'-0"	MH4-60CS4ID	4,280#

BASE SECTION

HEIGHT	ITEM NO	WEIGHT
2'-0"	MH4-24S4ID	2,640#
2'-6"	MH4-30S4ID	3,067#
3'-0"	MH4-36S4ID	3,495#
3'-6"	MH4-42S4ID	3,922#
4'-0"	MH4-48S4ID	4,350#
4'-6"	MH4-54S4ID	4,777#
5'-0"	MH4-60S4ID	5,205#
5'-6"	MH4-66S4ID	5,633#
6'-0"	MH4-72S4ID	6,060#

NOTES:

1. CONCRETE: 4,000 PSI MINIMUM AFTER 28 DAYS.
2. REINFORCED STEEL CONFORMS TO ASTM A185 SPEC. 0.12 SQ. IN./LINEAL FT. AND 0.12 SQ. IN. (BOTH WAYS) BASE BOTTOM.
3. DESIGN LOADING PER AASHTO HS-20, 1 TO 5 FEET COVER.
4. MANHOLE DESIGN SPECS CONFORM TO ASTM C478 SPEC FOR "PRECAST REINFORCED CONCRETE MANHOLE SECTIONS."