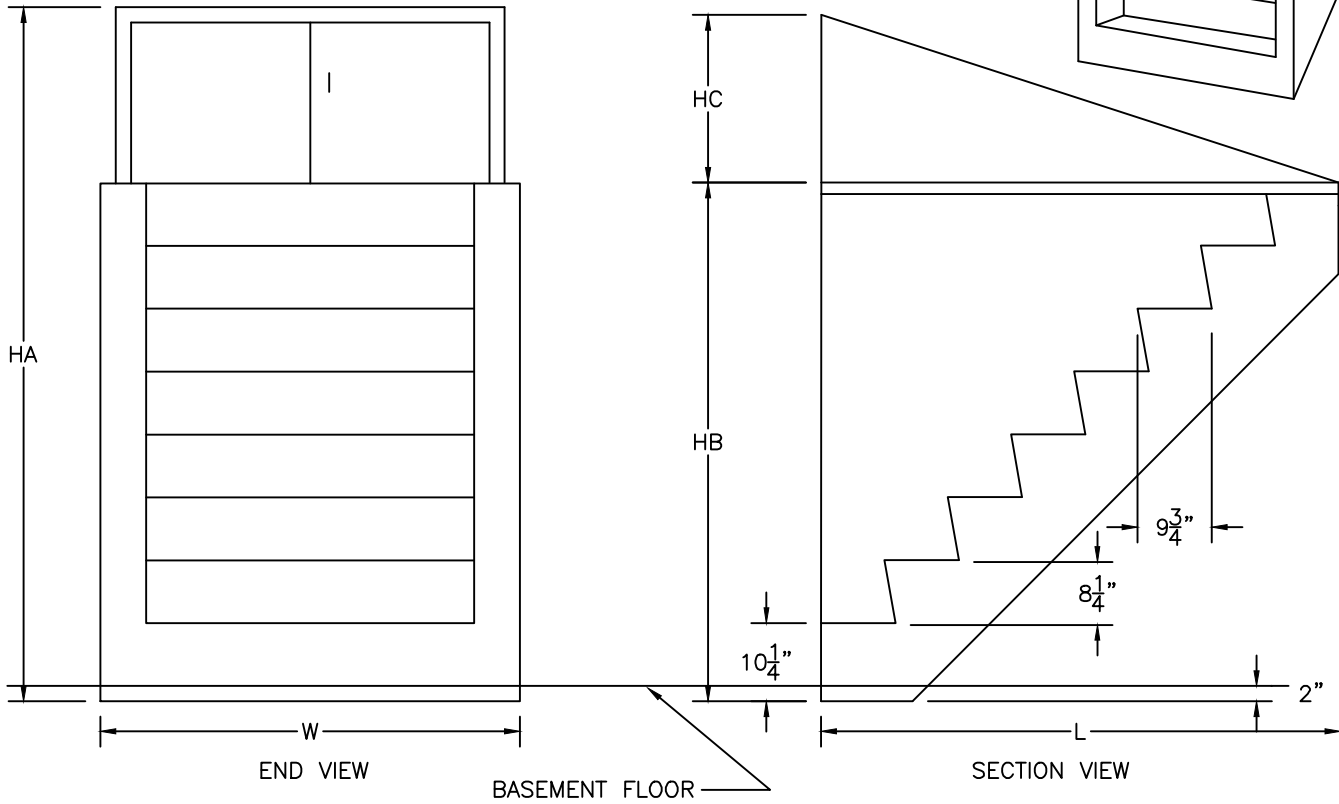
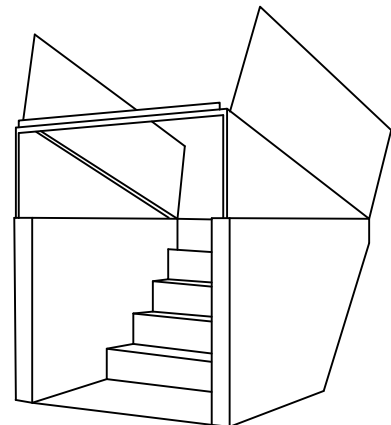


NOTES:

1. CONCRETE: 4,000 PSI MINIMUM AFTER 28 DAYS.
2. HEAVY DOUBLE LEAF STEEL DOORS WITH RED PRIMER.
3. OPTIONAL DOOR LOCK AVAILABLE.



TYPE	W (WIDTH)	L (LENGTH)	HEIGHT			WEIGHT (LBS)	ITEM NO.
			HA (TOTAL)	HB (PRECAST)	HC (DOOR)		
S	51 1/2"	45"	95"	43"	52"	2,400	BH-S
A	51 1/2"	60"	90"	60"	30"	3,600	BH-A
B	55 1/2"	66"	90"	68"	22"	4,800	BH-B
C	55 1/2"	74"	95 1/2"	76"	19 1/2"	5,500	BH-C
D	55 1/2"	86"	106"	84"	22"	6,200	BH-D
E	58"	95 1/2"	115"	93"	22"	7,800	BH-E
F	58"	104"	123"	101"	22"	9,000	BH-F



CRAWL SPACE

*CRAWL SPACE UNIT HAS OPEN BOTTOM, SEE CRAWLSPACE DRAWING