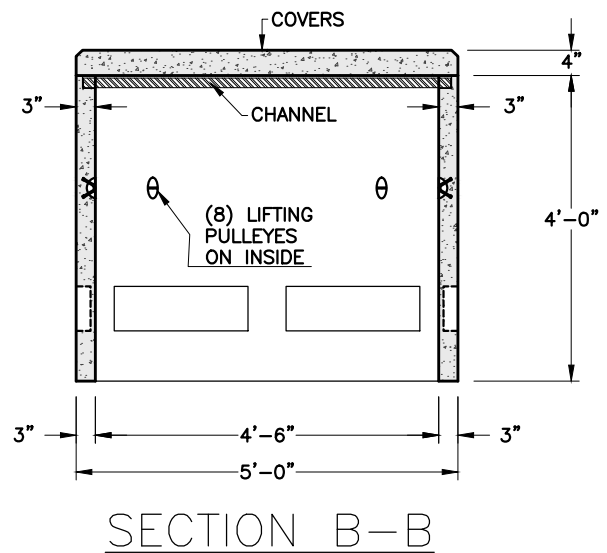
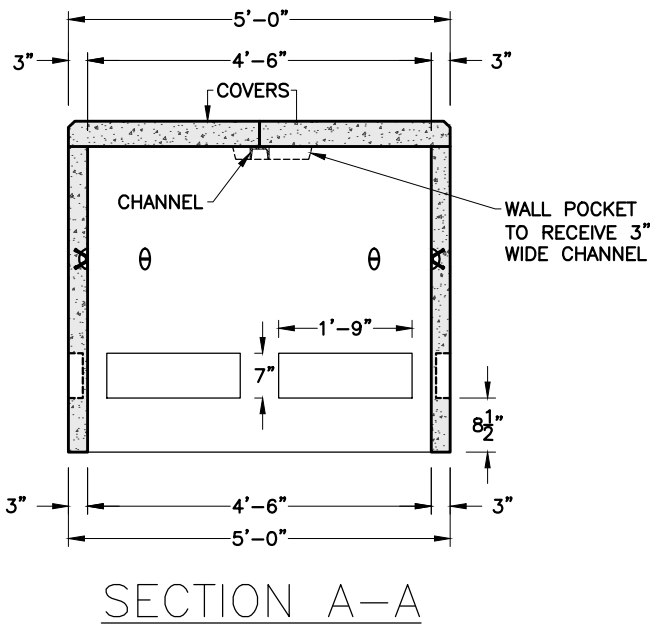
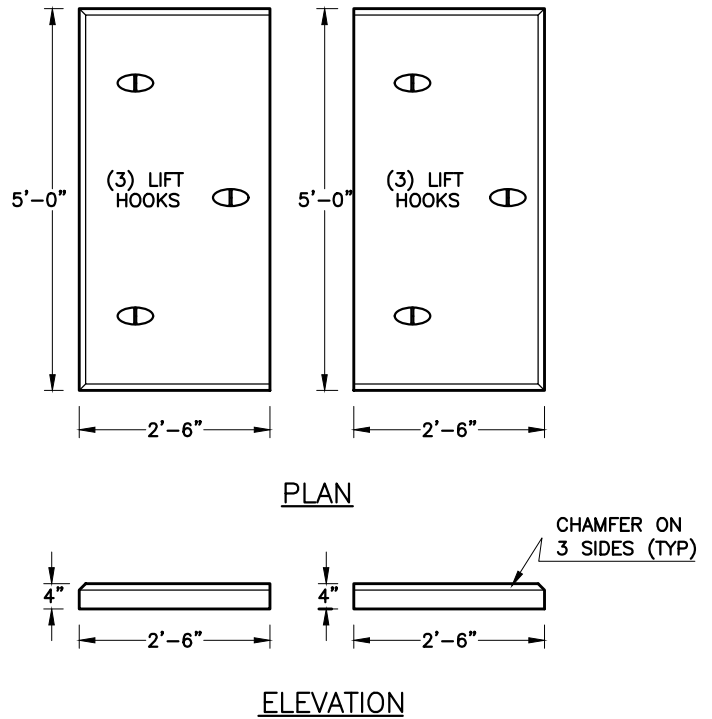
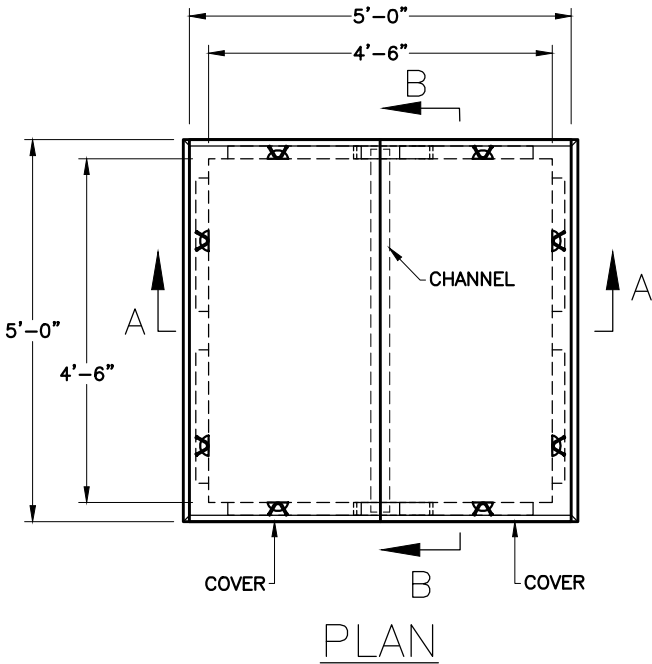


UNITIL 2-3-12
 THREE PHASE PULL BOX



- NOTES:
 1. CONCRETE MINIMUM STRENGTH 4,000 PSI AFTER 28 DAYS.

SHEA PRODUCT ID: U2-3-12

FILE NAME: UNITIL 2-3-12.dwg

WEIGHT (LBS): 4,500#

DRAWN BY: NMB

DATE: 12/11/2014

PAGE: VII.A.2

