

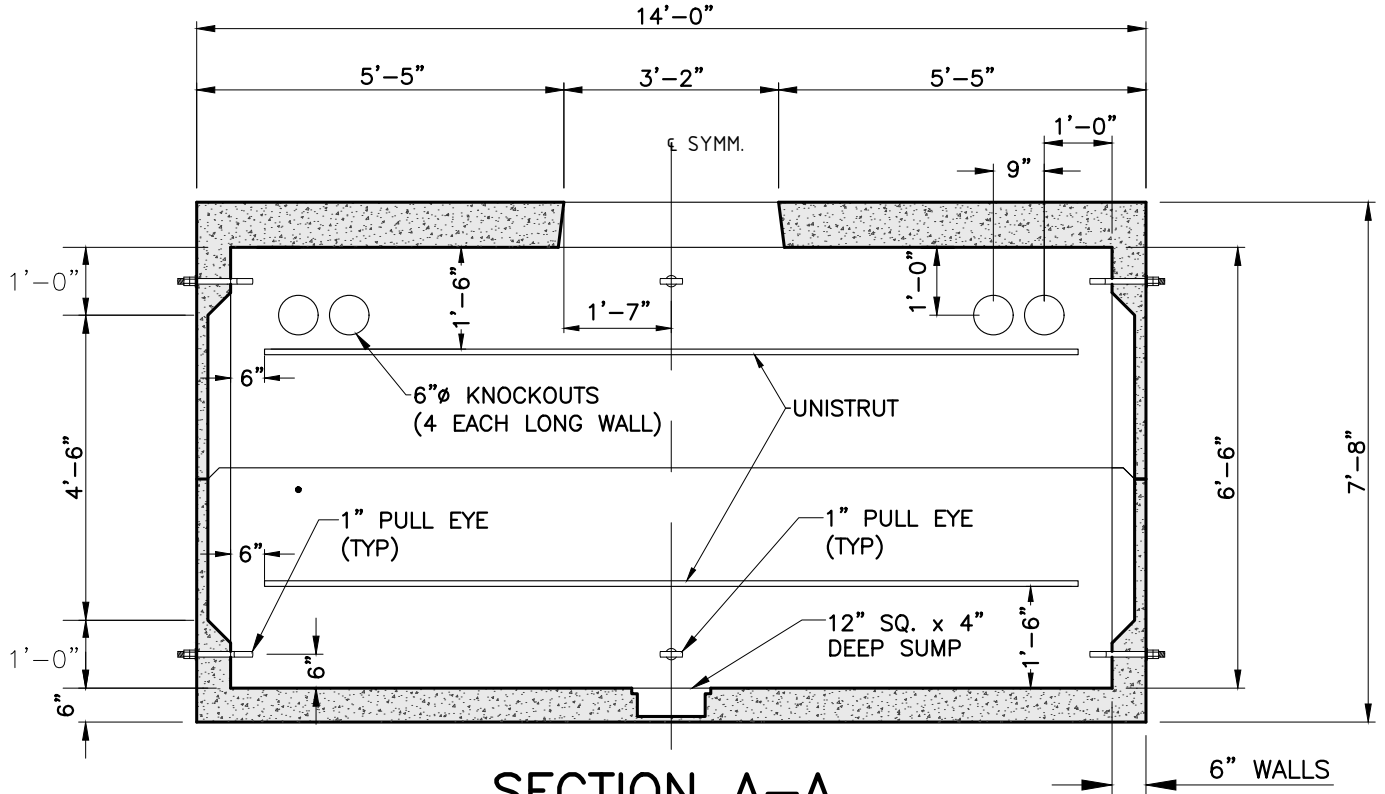
PLAN

NOTES:

1. CONCRETE: 5,000 PSI MINIMUM AFTER 28 DAYS.
2. DESIGN LOADING: AASHTO HS20-44, 0 TO 5 FEET COVER.
3. DESIGN SPECIFICATIONS - ACI 318 & AASHTO LOAD FACTOR DESIGN METHOD.
4. STEEL REINFORCEMENT CONFORMS TO ASTM A615, GRADE 60. MINIMUM COVER 1"
5. ALL TERMINATORS SHALL HAVE BELL ENDS FLUSH WITH THE INSIDE WALL.
6. CONSTRUCTION JOINT SHALL BE SEALED WITH 1"Ø BUTYL RUBBER OR APPROVED EQUAL.

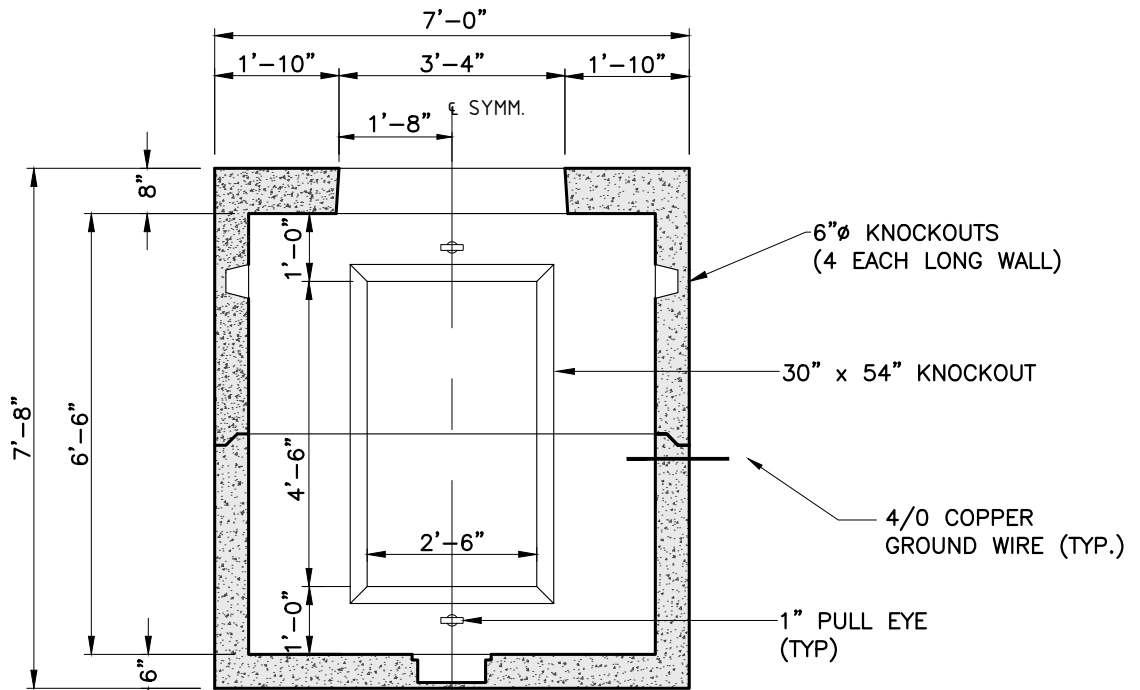
SHEA PRODUCT ID: NG-613-66	FILE NAME: NGRID UM22		
WEIGHT (LBS): 34500	DRAWN BY: L.P.	DATE: 12/22/2017	PAGE: IV.C.1-1





SECTION A-A

OPPOSITE WALLS ARE MIRROR IMAGES.



SECTION B-B

OPPOSITE WALLS ARE MIRROR IMAGES.

SHEA PRODUCT ID: NG-613-66	FILE NAME: NGRID UM22		
WEIGHT (LBS): 34500	DRAWN BY: L.P.	DATE: 12/22/2017	PAGE: I.V.C.1-2

