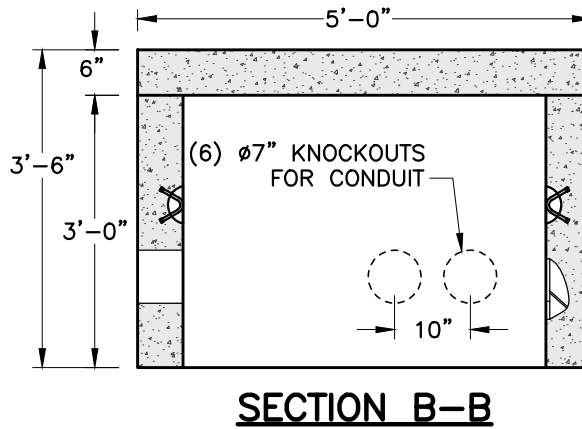
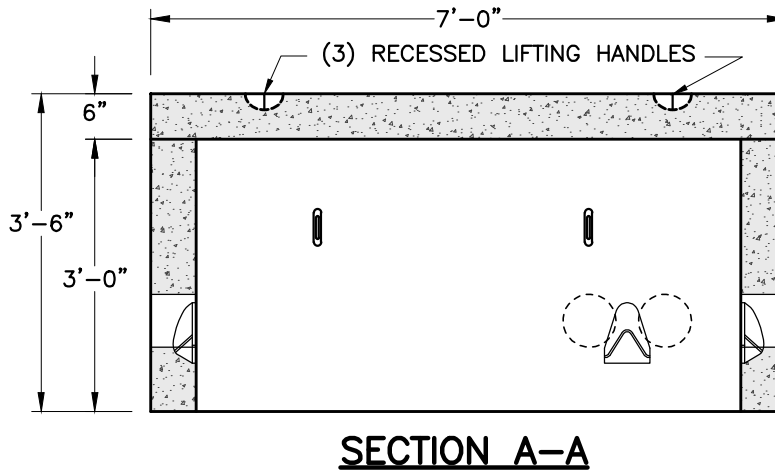
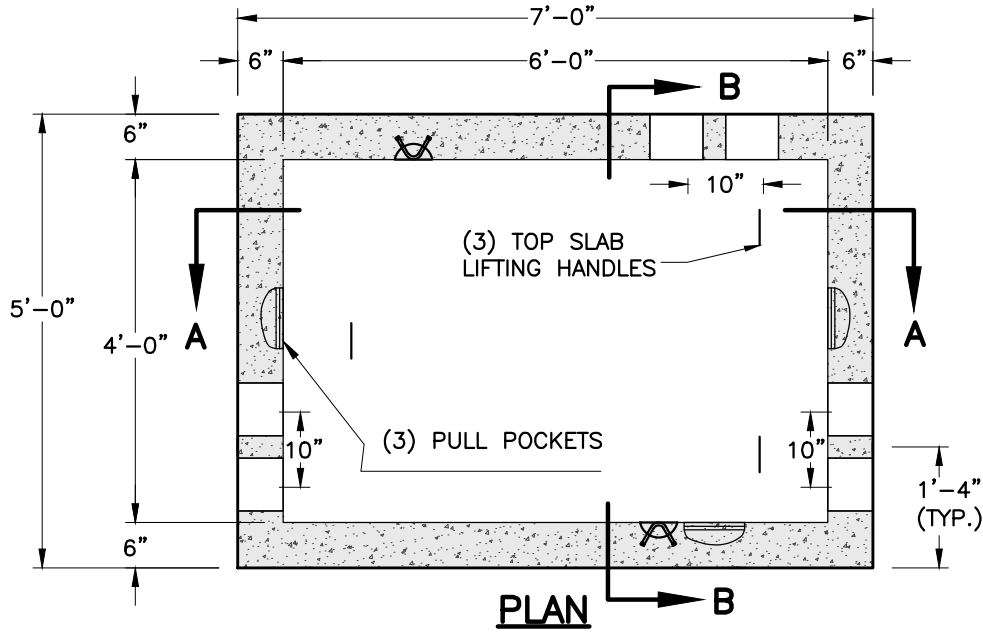


EVERSOURCE-NH PULLBOX
 (GRASSY AREA)



- NOTES:
1. CONCRETE MINIMUM STRENGTH 4,000 PSI AFTER 28 DAYS.
 2. STEEL REINFORCING: ASTM-A615 GRADE #60
 3. DESIGNED FOR H-10 LOADING.

ITEM	WEIGHT
COVER	2,600#
BASE	4,800#
TOTAL	7,400#

SHEA PRODUCT ID: PSNHPB

FILE NAME: EVERSOURCE PULLBOX GRASSY AREA.dwg

WEIGHT (LBS): 7,400#

DRAWN BY: MNN

DATE: 01/05/2018

PAGE: III.A.3

