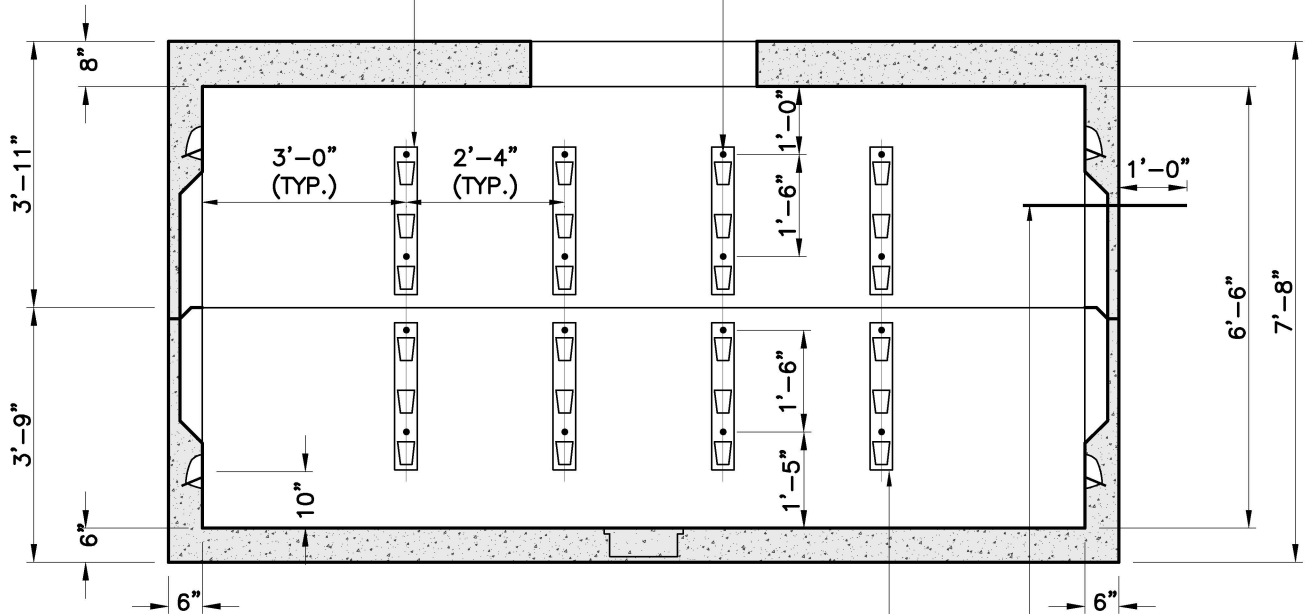


(16) 5/8" DIA THREADED STEEL INSERT (BOTH LONG WALLS)

3 POSITION STANCHION (TYP.)

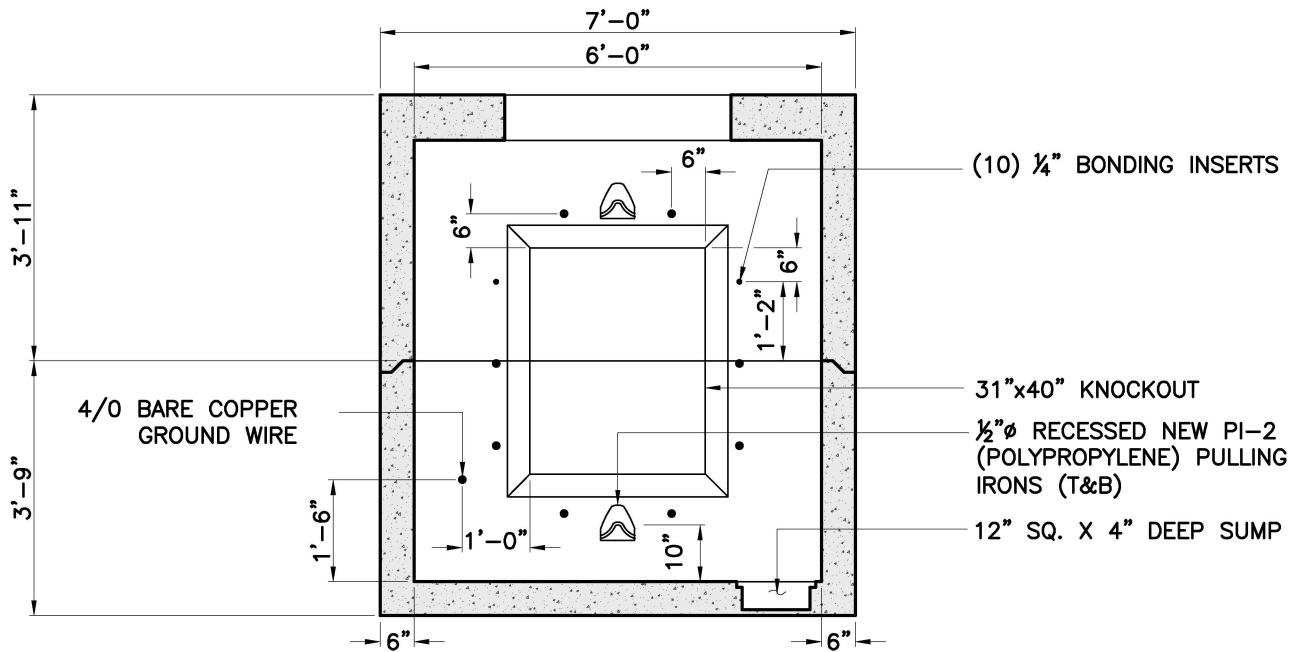


3 POSITION STANCHION (TYP.)

4/0 COPPER
 GROUND WIRE
 (TYP.)

SECTION A-A

OPPOSITE WALLS ARE MIRROR IMAGES.

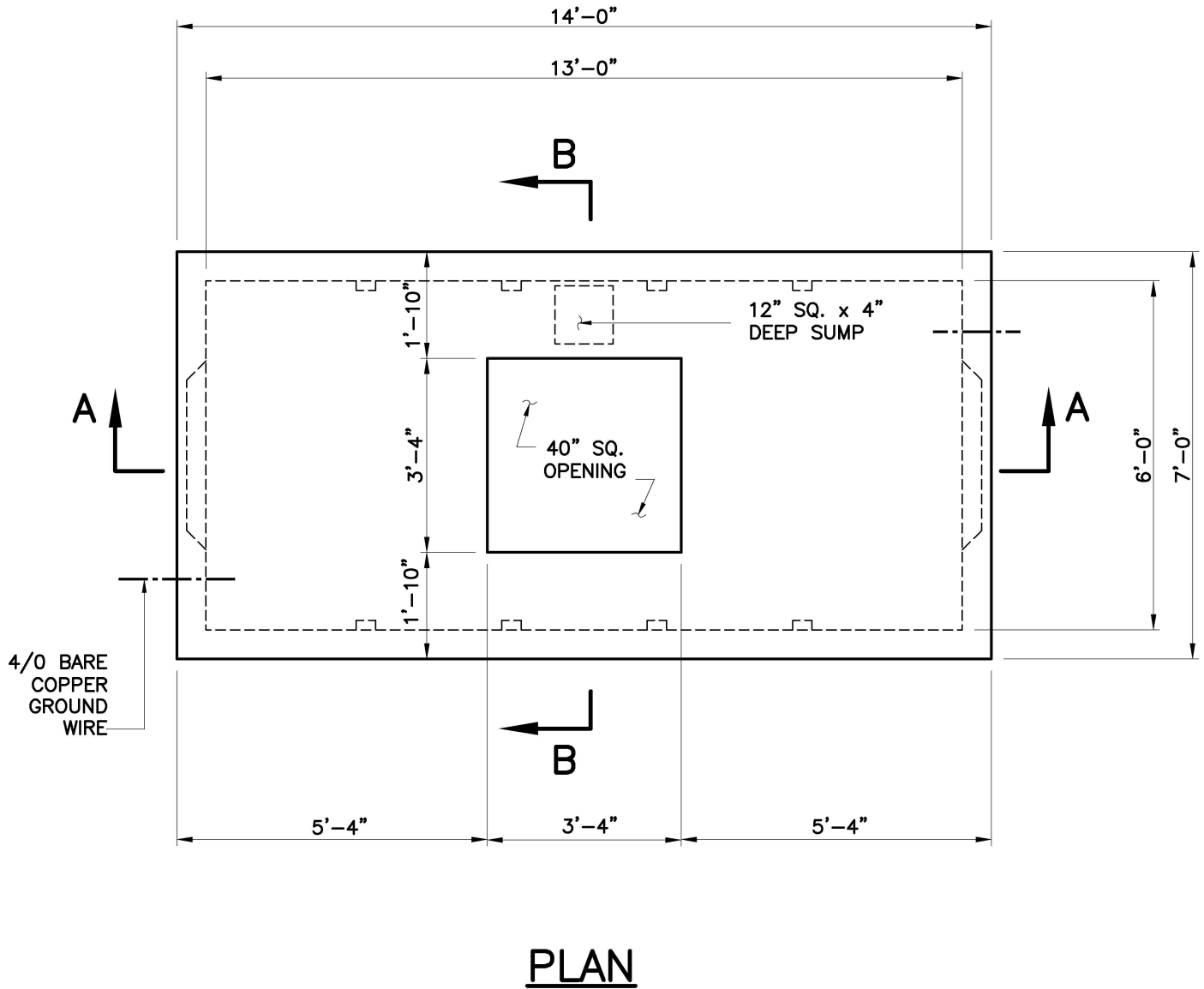


SECTION B-B

OPPOSITE WALLS ARE MIRROR IMAGES.

SHEA PRODUCT ID:	NSM1215	FILE NAME:	ES-MA M1215		
WEIGHT (LBS):	34355	DRAWN BY:	L.P.	DATE:	12/8/2017
				PAGE:	II.B.13-2





NOTES:

1. CONCRETE: 5,000 PSI MINIMUM AFTER 28 DAYS.
2. DESIGN LOADING: AASHTO HS20-44, 0 TO 5 FEET COVER.
3. DESIGN SPECIFICATIONS - ACI 318 & AASHTO LOAD FACTOR DESIGN METHOD.
4. STEEL REINFORCEMENT CONFORMS TO ASTM A615, GRADE 60. MINIMUM STEEL COVER 1 1/2".
5. ALL TERMINATORS SHALL HAVE BELL ENDS FLUSH WITH THE INSIDE WALL.
6. CONSTRUCTION JOINT SHALL BE SEALED WITH 1"Ø BUTYL RUBBER OR APPROVED EQUAL.
7. RACKING/STANCHIONS SOLD SEPARATELY.

SHEA PRODUCT ID:	NSM1215	FILE NAME:	ES-MA M1215
WEIGHT (LBS):	34355	DRAWN BY:	L.P.
		DATE:	12/8/2017
		PAGE:	II.B.13-1

