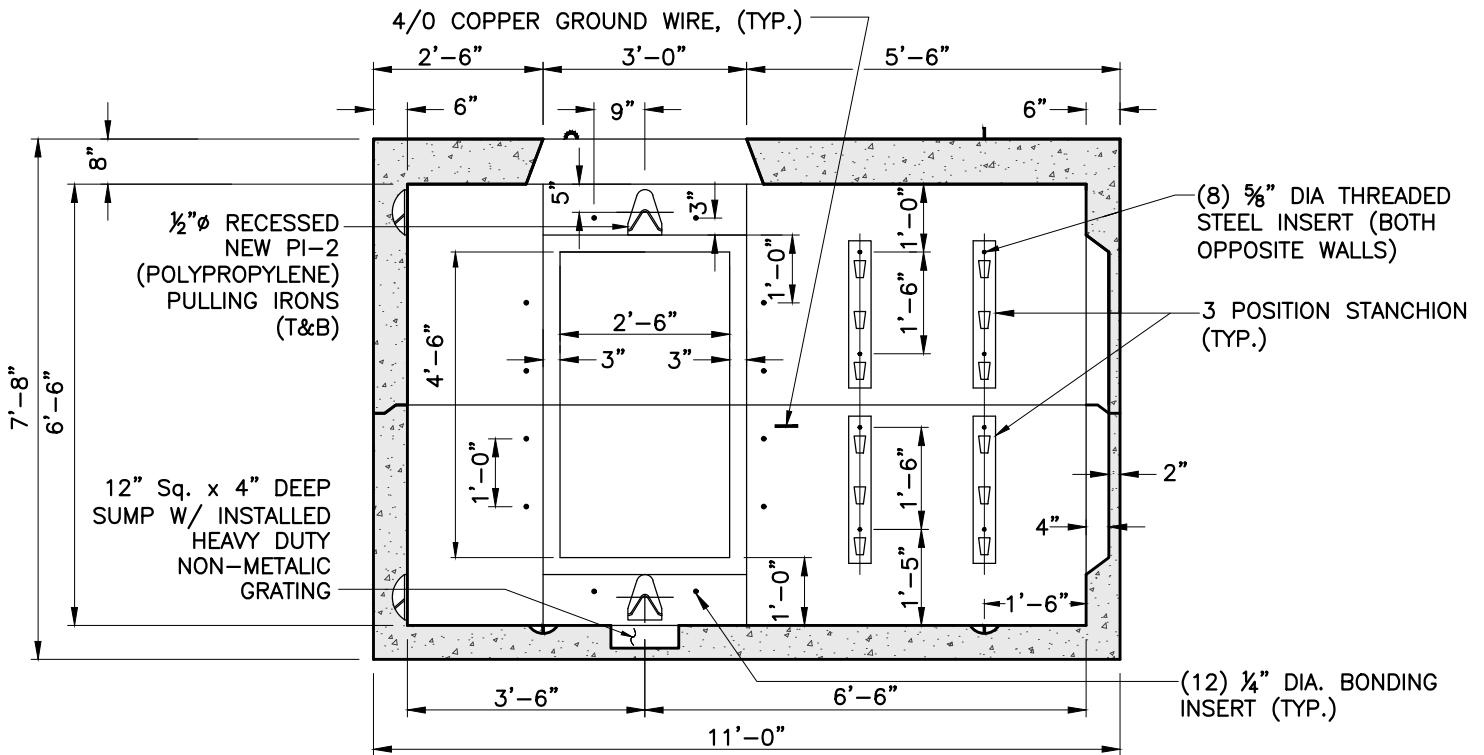


**SECTION A-A**



**SECTION B-B**

OPPOSITE WALLS ARE MIRROR IMAGES.

SHEA PRODUCT ID: NSM1211

FILE NAME: ES-MA M1211

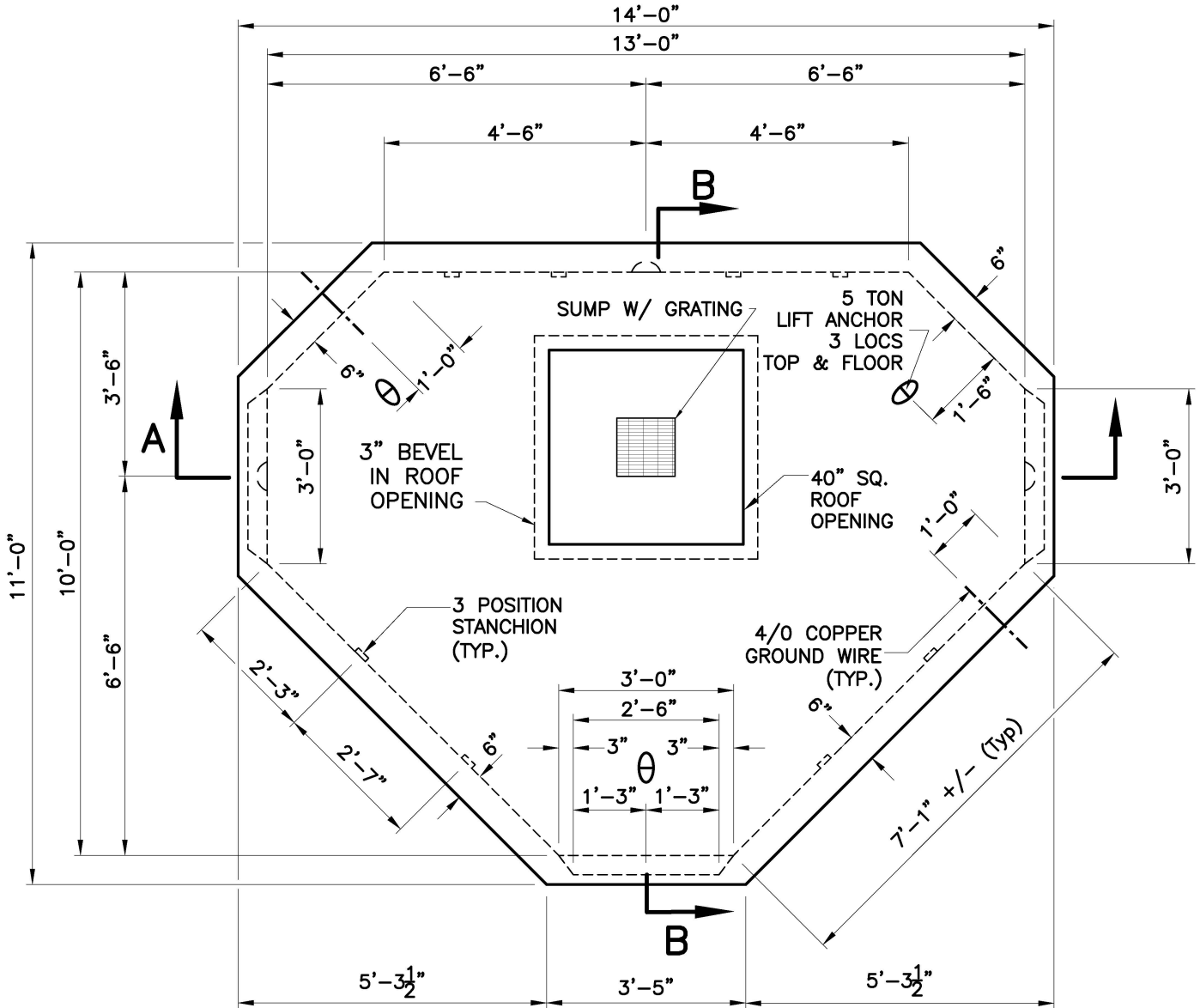
WEIGHT (LBS): 40900

DRAWN BY: L.P.

DATE: 9/22/2017

PAGE: I I.B.10-2





**PLAN**

NOTES:

1. CONCRETE: 5,000 PSI MINIMUM AFTER 28 DAYS.
2. DESIGN LOADING: AASHTO HS20-44, 0 TO 5 FEET COVER.
3. DESIGN SPECIFICATIONS - ACI 318 & AASHTO LOAD FACTOR DESIGN METHOD.
4. STEEL REINFORCEMENT CONFORMS TO ASTM A615, GRADE 60. MINIMUM STEEL COVER 1 1/2".
5. ALL TERMINATORS SHALL HAVE BELL ENDS FLUSH WITH THE INSIDE WALL.
6. CONSTRUCTION JOINT SHALL BE SEALED WITH 1"Ø BUTYL RUBBER OR APPROVED EQUAL.
7. RACKING/STANCHIONS SOLD SEPARATELY.

SHEA PRODUCT ID:	NSM1211	FILE NAME:	ES-MA M1211		
WEIGHT (LBS):	40900	DRAWN BY:	L.P.	DATE:	9/22/2017
				PAGE:	II.B.10-1

