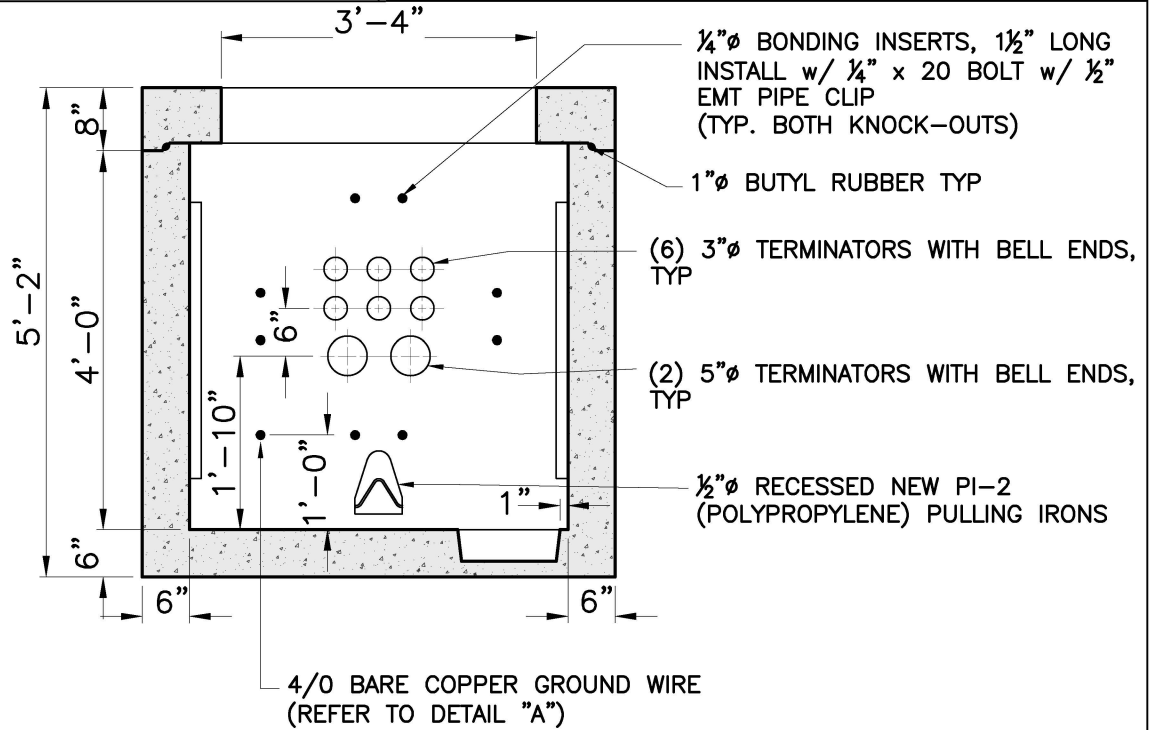
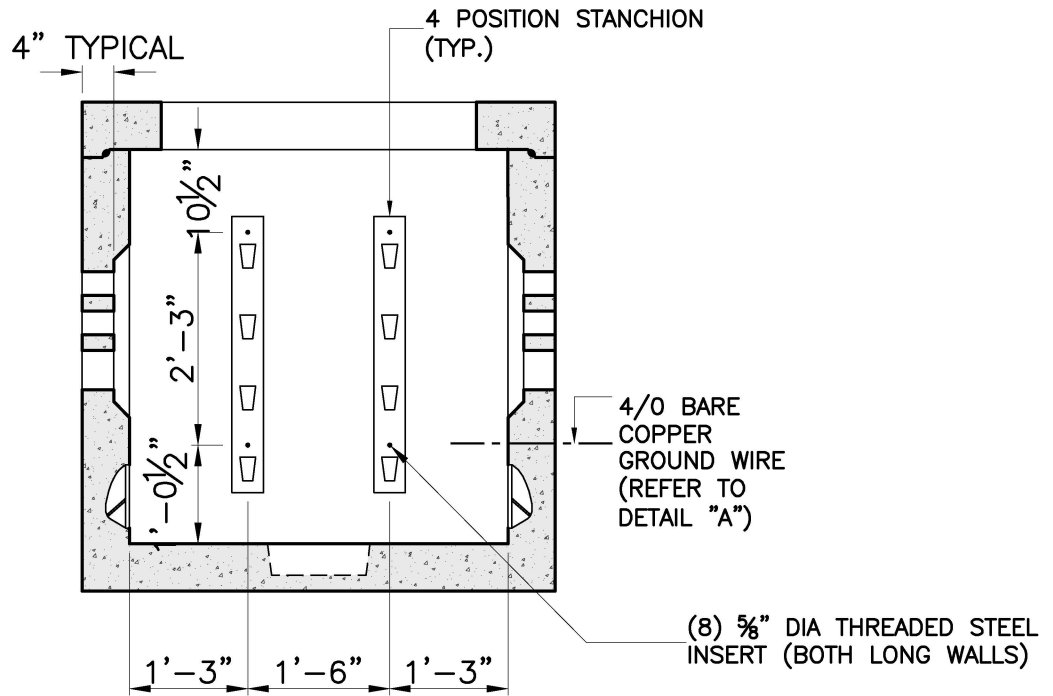


EVERSOURCE-MA MANHOLE
 M1201 4' W X 4' L X 4' H



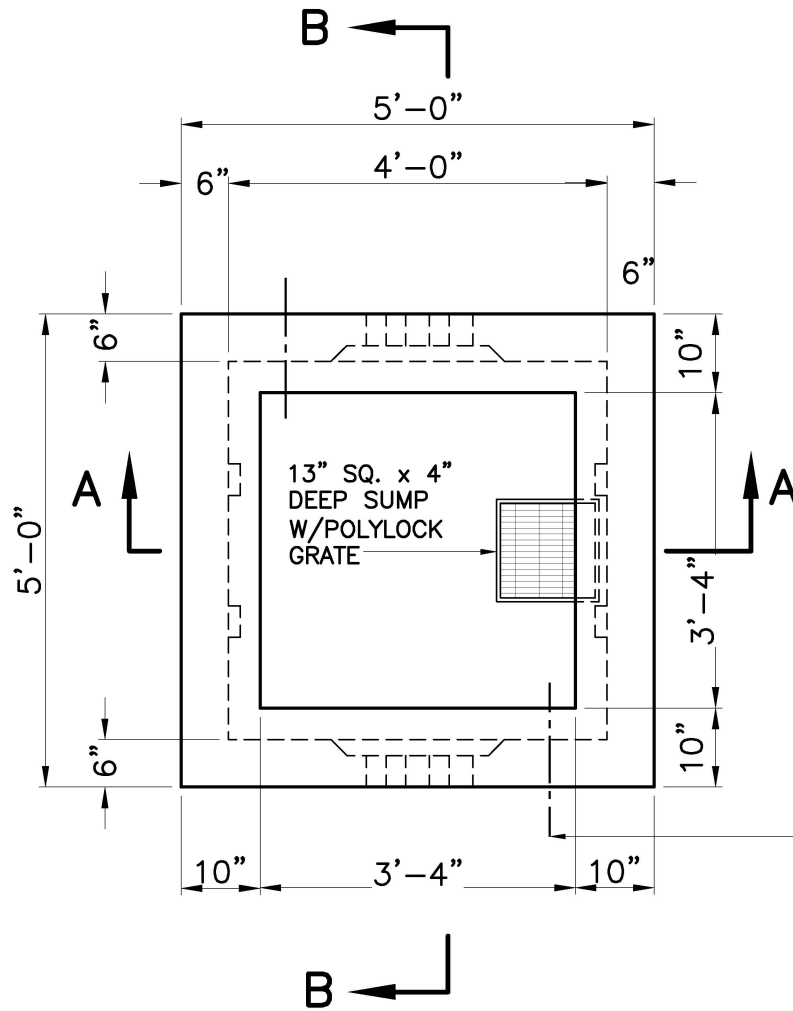
SECTION A-A
 OPPOSITE WALLS ARE MIRROR IMAGES.



SECTION B-B
 OPPOSITE WALLS ARE MIRROR IMAGES.

| | | | | | |
|------------------|---------|------------|-------------|-------|-----------|
| SHEA PRODUCT ID: | NSM1201 | FILE NAME: | ES-MA M1201 | | |
| WEIGHT (LBS): | 6300 | DRAWN BY: | L.P. | DATE: | 8/21/2017 |
| | | | | PAGE: | II.B.1-2 |





PLAN

NOTES:

1. CONCRETE: 5,000 PSI MINIMUM AFTER 28 DAYS.
2. DESIGN LOADING: AASHTO HS20-44, 0 TO 5 FEET COVER.
3. DESIGN SPECIFICATIONS - ACI 318 & AASHTO LOAD FACTOR DESIGN METHOD.
4. STEEL REINFORCEMENT CONFORMS TO ASTM A615, GRADE 60. MINIMUM STEEL COVER 1 1/2".
5. ALL TERMINATORS SHALL HAVE BELL ENDS FLUSH WITH THE INSIDE WALL.
6. CONSTRUCTION JOINT SHALL BE SEALED WITH 1"Ø BUTYL RUBBER OR APPROVED EQUAL.
7. RACKING/STANCHIONS SOLD SEPARATELY.

| | | | |
|--------------------------|------------------------|-----------------|------------------|
| SHEA PRODUCT ID: NSM1201 | FILE NAME: ES-MA M1201 | | |
| WEIGHT (LBS): 6300 | DRAWN BY: L.P. | DATE: 8/21/2017 | PAGE: I I .B.1-1 |

