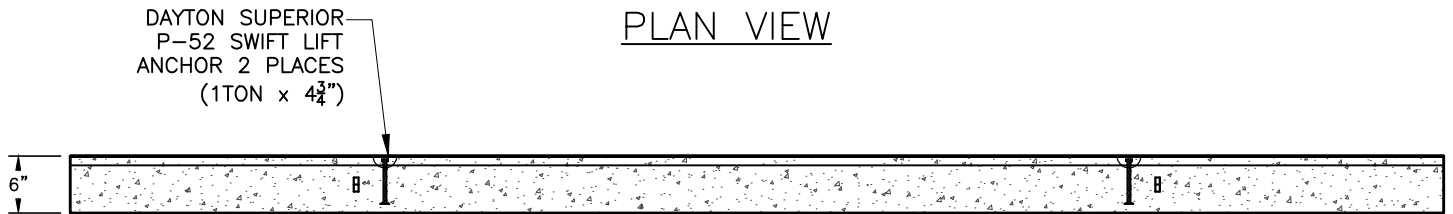
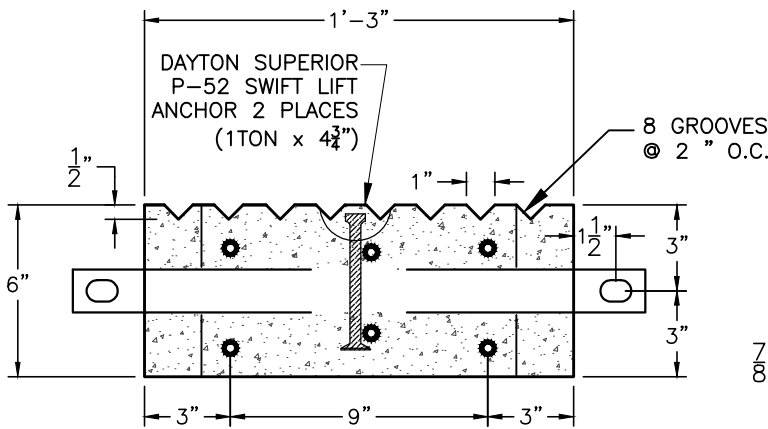


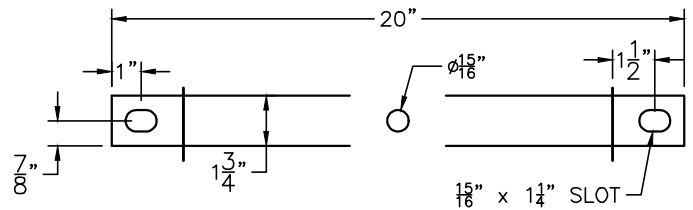
PLAN VIEW



ELEVATION VIEW



ENLARGED SECTION VIEW



GALVANIZED CONNECTING BAR  
( $1\frac{3}{4}$ " x  $\frac{1}{2}$ " x 20")

NOTES:

1. CONCRETE: 5000 PSI MINIMUM AFTER 28 DAYS
2. REINFORCED STEEL: CONFORMS TO ASTM A615 GRADE 60  
(6) #4 REBAR W/  $1\frac{1}{2}$ " COVER.
3.  $1\frac{3}{4}$ " x  $\frac{1}{2}$ " x 20" STEEL CAST INTO CONCRETE SECTIONS.

WEIGHT

TOTAL	1,050
-------	-------

SHEA PRODUCT ID:

PREPARED FOR:

FILE NAME:

Boat Ramp NHFG.dwg

WEIGHT (LBS):

DRAWN BY:

ARO

DATE:

06/01/18

PAGE:

M12.2

