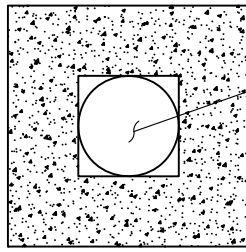
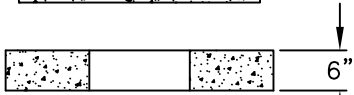


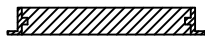
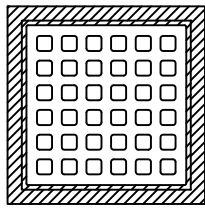
2' SQUARE AREA DRAIN WITH KNOCKOUTS



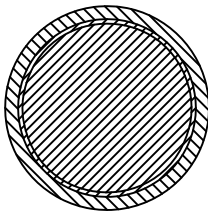
OPENING SIZE AND SHAPE AS SPECIFIED



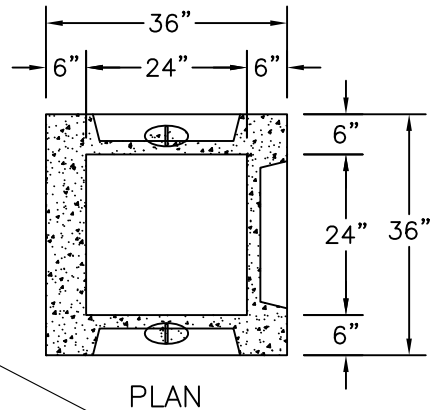
AVAILABLE TOP SLAB
 EST WEIGHT: 660 LBS



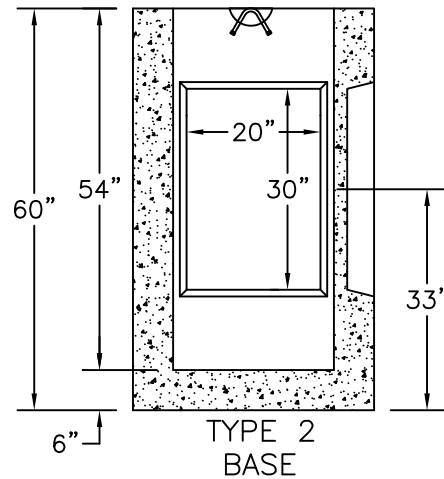
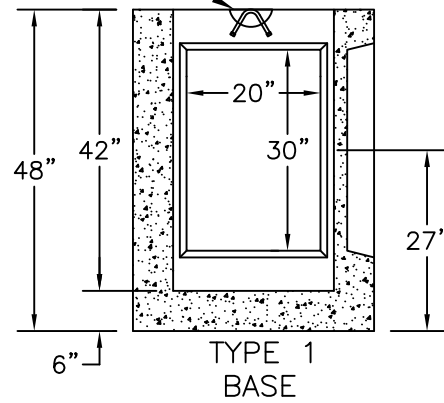
OPTIONAL CAST IRON
 FRAME AND GRATE



OPTIONAL CAST IRON
 FRAME AND COVER



RECESSED LIFTING HANDLE (2 PLACES)



NOTES:

1. CONCRETE: 4,000 PSI MIN. AFTER 28 DAYS
2. DESIGNED FOR AASHTO HS-20 LOADING

SIZE	EST. WEIGHT
48"(42" INSIDE)	3,260 LBS
60"(54" INSIDE)	4,000 LBS

SHEA PRODUCT ID:	PREPARED FOR:	FILE NAME:	2SQADWK.dwg	
WEIGHT (LBS): 3,260#/4,000#	DRAWN BY: ARO	DATE: 06/01/18	PAGE: G9.4	
773 Salem Street-Wilmington, MA 153 Cranberry Hwy-Rochester, MA 87 Haverhill Road-Amesbury, MA 160 Old Turnpike Rd-Nottingham, NH				