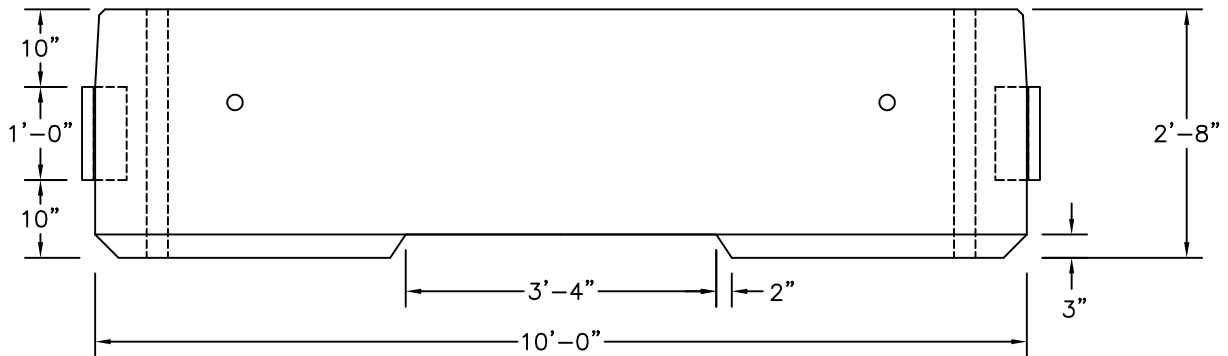
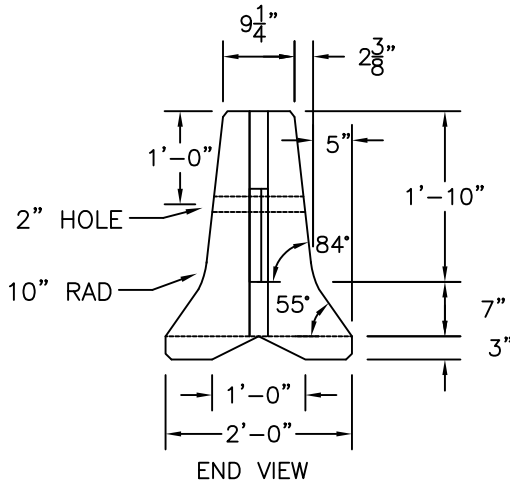


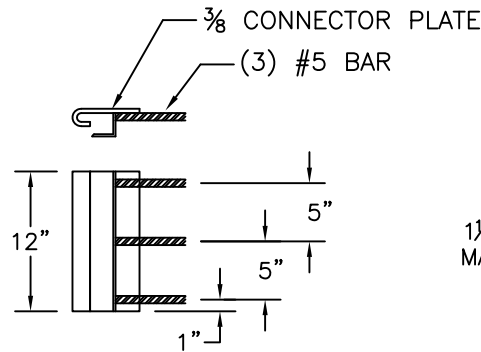
TOP VIEW



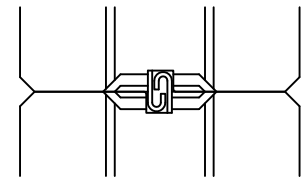
SIDE VIEW



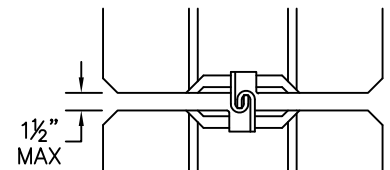
END VIEW



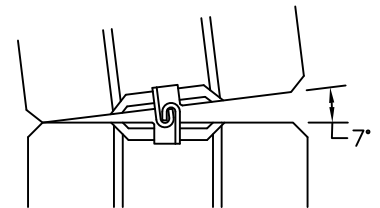
CONNECTOR PLATE DETAIL



CLOSED POSITION



MAXIMUM SEPARATION



HORIZONTAL ROTATION

NOTES:

1. CONCRETE: 5,000 PSI MINIMUM AFTER 28 DAYS.
2. REINFORCING REBAR MEETS ASTM A706 GRADE 60, WELDED TO STEEL CONNECTOR PLATES.
3. ALL REINFORCEMENT HOT-DIP GALVANIZED.
4. DESIGN: FHWA APPROVED POSITIVE CONNECTION. J-J HOOKS IS ACCEPTED BY FHWA AS A CRASH TESTED AND OPERATIONAL DESIGN FOR USE ON ALL FEDERAL AID HIGHWAY PROJECTS.
5. CERTIFIED NCHRP-350, TEST LEVEL 3, CRASH TESTED.
6. INSTALLATION: BARRIERS ARE SELF-ALIGNING WITH NO LOOSE HARDWARE.

	WEIGHT
ITEM NO. MC-MBDF-F	4,550#



New England's Premier Precaster
 800-696-7432 (SHEA)
 www.sheaconcrete.com

TEMPORARY BARRIER TYPE F
 J-J HOOK CONNECTION

773 Salem Street-Wilmington, MA 153 Cranberry Hwy-Rochester, MA
 87 Haverhill Road-Amesbury, MA 160 Old Turnpike Rd-Nottingham, NH
 Mail to: PO Box 520-Wilmington, MA 01887

Page: J4.7-1 7/10/12

medbar DOT Temp.dwg

