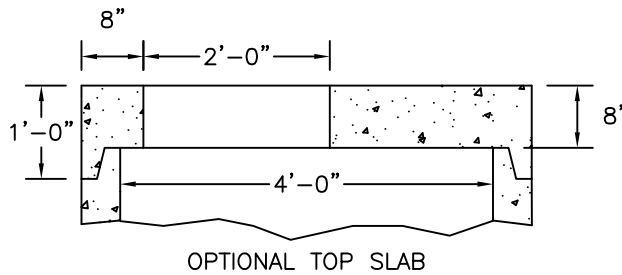


FLAT TOP

	ITEM NO	WEIGHT
1 HOLE	MH4-FT4ID	1,620#
2 HOLE	MH4-FT4ID2H	930#



ECCENTRIC CONE

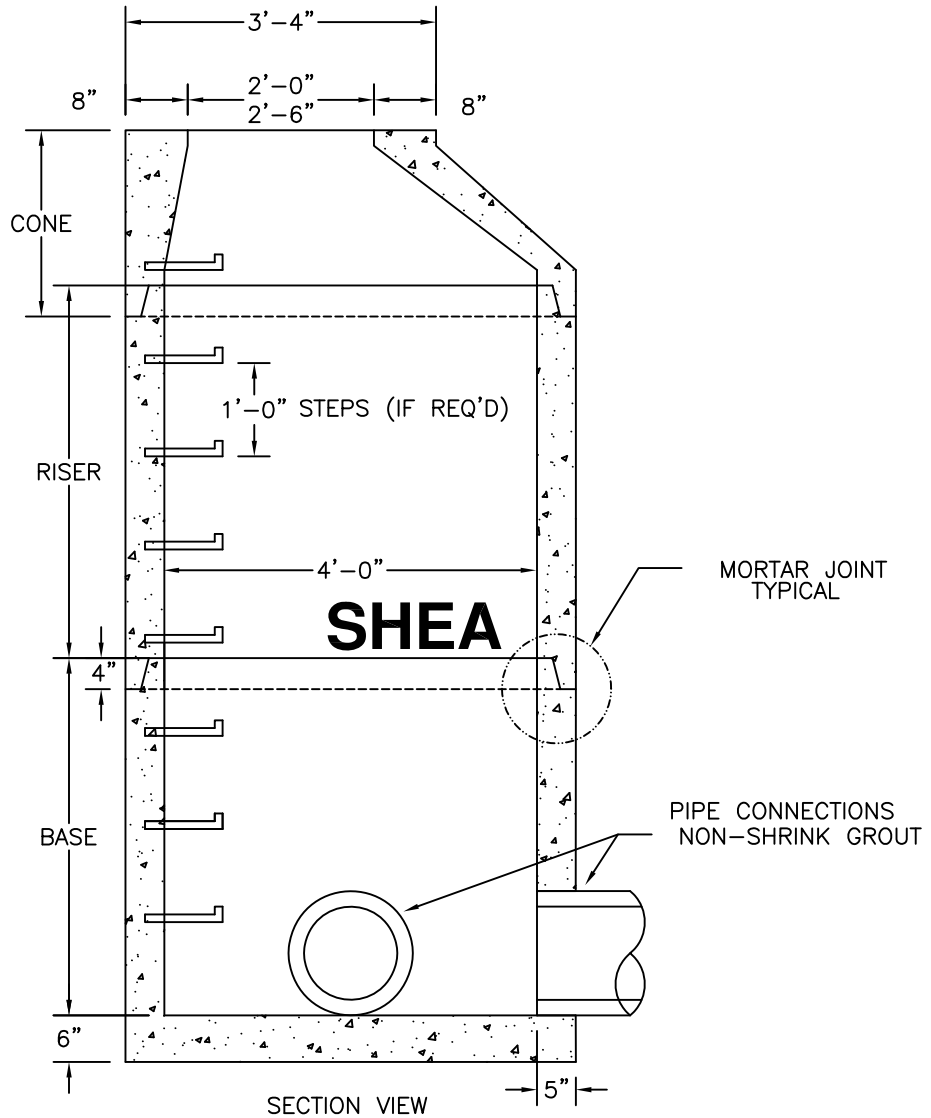
HEIGHT	ITEM NO	WEIGHT
1'-6"	MH4-18C4ID	1,335#
2'-0"	MH4-24C4ID	1,783#
2'-6"	MH4-30C4ID	2,231#
3'-0"	MH4-36C4ID	2,677#
4'-0"	MH4-48C4ID	3,425#

RISER SECTION

HEIGHT	ITEM NO	WEIGHT
1'-0"	MH4-12CS4ID	856#
2'-0"	MH4-24CS4ID	1,712#
2'-6"	MH4-30CS4ID	2,140#
3'-0"	MH4-36CS4ID	2,568#
4'-0"	MH4-48CS4ID	3,424#
5'-0"	MH4-60CS4ID	4,280#

BASE SECTION

HEIGHT	ITEM NO	WEIGHT
2'-0"	MH4-24S4ID	2,640#
2'-6"	MH4-30S4ID	3,067#
3'-0"	MH4-36S4ID	3,495#
3'-6"	MH4-42S4ID	3,922#
4'-0"	MH4-48S4ID	4,350#
4'-6"	MH4-54S4ID	4,777#
5'-0"	MH4-60S4ID	5,205#
5'-6"	MH4-66S4ID	5,633#
6'-0"	MH4-72S4ID	6,060#



NOTES:

1. CONCRETE: 4,000 PSI MINIMUM AFTER 28 DAYS.
2. REINFORCED STEEL CONFORMS TO LATEST ASTM A185 SPEC. 0.12 SQ. IN./LINEAL FT. AND 0.12 SQ. IN. (BOTH WAYS) BASE BOTTOM.
3. H-20 DESIGN LOADING PER AASHTO HS-20-44; ASTM C478 SPEC FOR "PRECAST REINFORCED CONCRETE MANHOLE SECTIONS."
4. STEEL REINFORCED COPOLYMER POLYPROPYLENE PLASTIC STEP CONFORMS TO LATEST ASTM C478 SPEC.



New England's Premier Precaster
 800-696-7432 (SHEA)
 www.sheaconcrete.com

DRAIN MANHOLE
 48" DIA

773 Salem Street-Wilmington, MA 153 Cranberry Hwy-Rochester, MA
 87 Haverhill Road-Amesbury, MA 160 Old Turnpike Rd-Nottingham, NH
 Mail to: PO Box 520-Wilmington, MA 01887

Page: G2.2

dmh48in.dwg

02/01/2013

