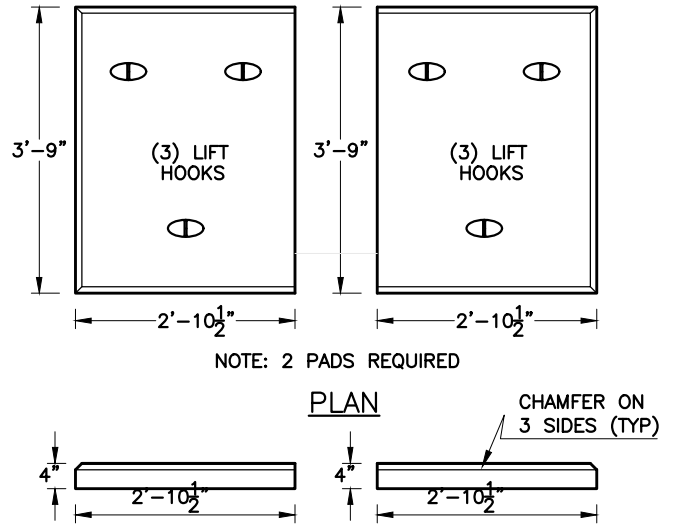
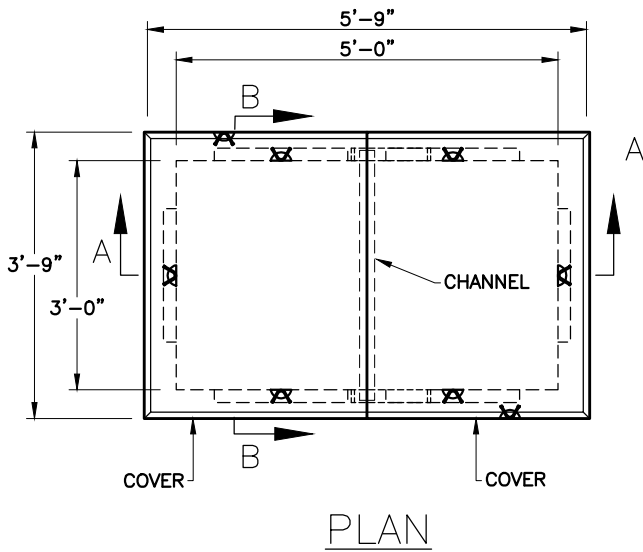
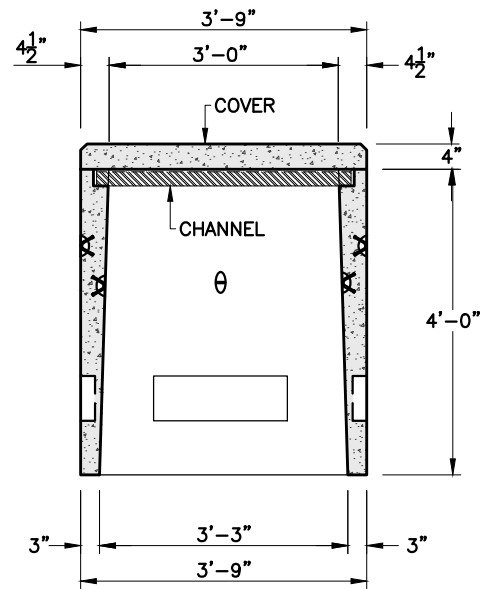
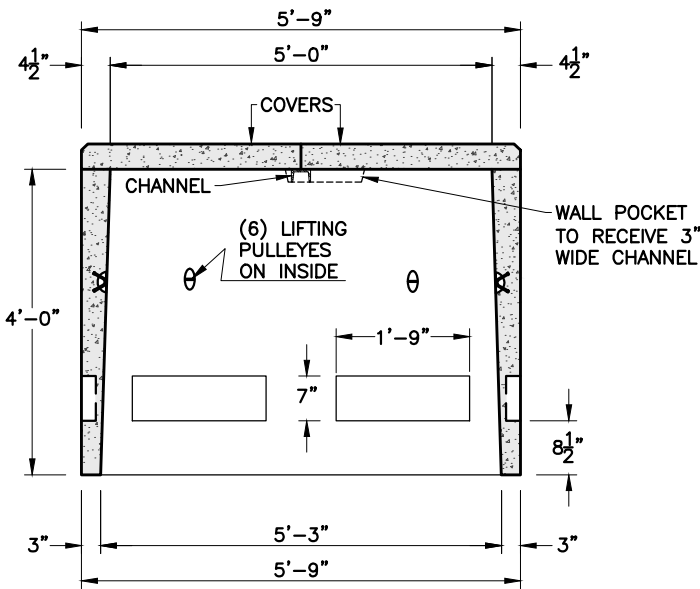


UNITIL 2-3-11
 SINGLE PHASE PULL BOX



NOTE: 2 PADS REQUIRED



NOTES:

1. CONCRETE MINIMUM STRENGTH 4,000 PSI AFTER 28 DAYS.

SHEA PRODUCT ID: U2-3-11

FILE NAME: UNITIL 2-3-11.dwg

WEIGHT (LBS): 4,500#

DRAWN BY: NMB

DATE: 12/11/2014

PAGE: VII.A.1

