

PLAN

NOTES:

1. CONCRETE: 5,000 PSI MINIMUM AFTER 28 DAYS.
2. ALL REINFORCEMENT PER ASTM A615, GRADE 60, 1" MIN COVER.
3. TONGUE & GROOVE JOINT SEALED WITH BUTYL RESIN.
4. 4" PVC TERMINATORS.
5. RECESSED PULLEYES.
6. 1/2" INSERTS FOR RACKING (LONG WALLS ONLY).
7. PVC SUMP WITH GRATE.



New England's Premier Precaster

800-696-7432 (SHEA)

www.sheaconcrete.com

UTILITY MANHOLE
4'x8'x6'

773 Salem Street—Wilmington, MA 153 Cranberry Hwy—Rochester, MA
87 Haverhill Road—Amesbury, MA 160 Old Turnpike Rd—Nottingham, NH

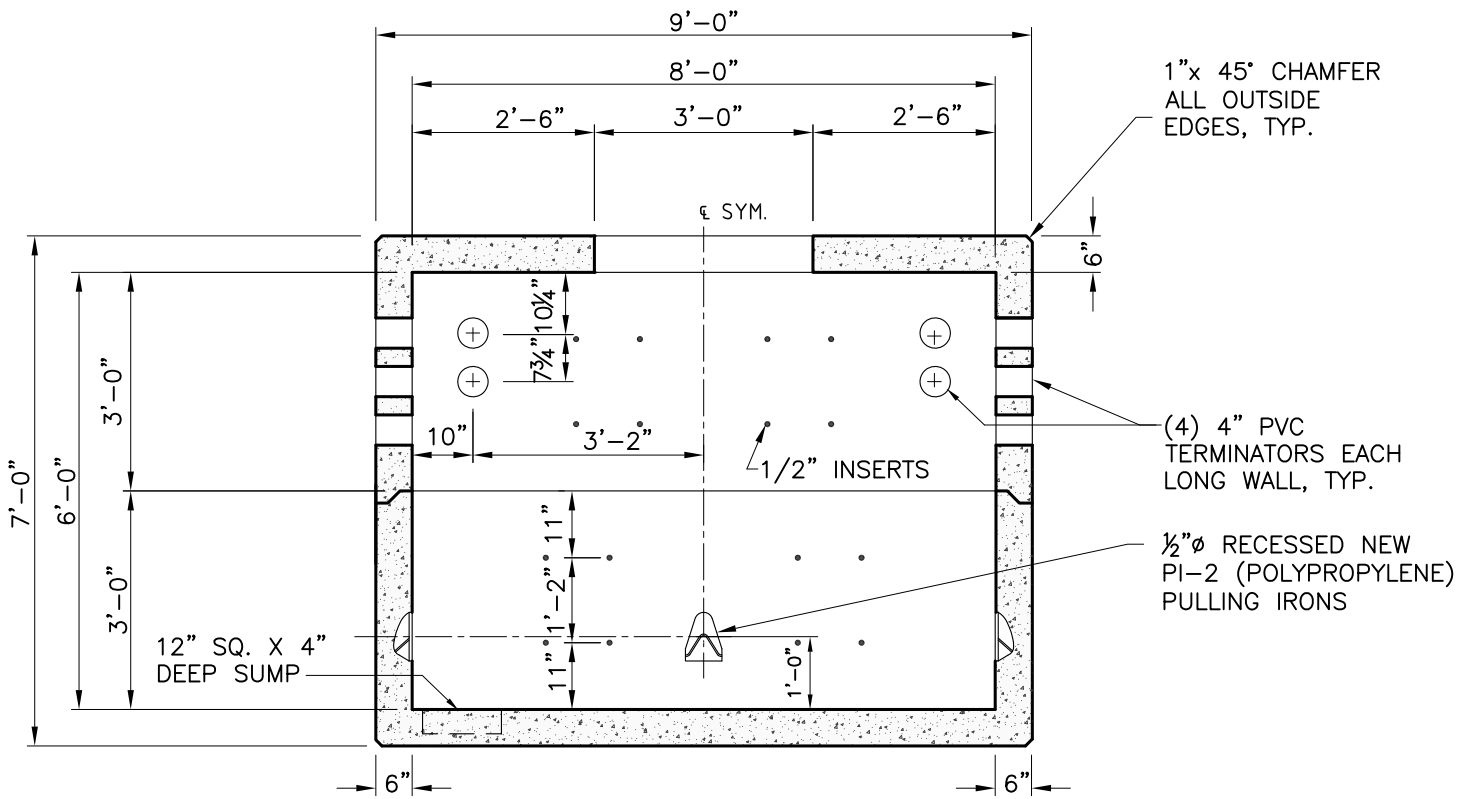
Mail to: PO Box 520—Wilmington, MA 01887

Page: K2.10.1

UM 4x8x6.dwg

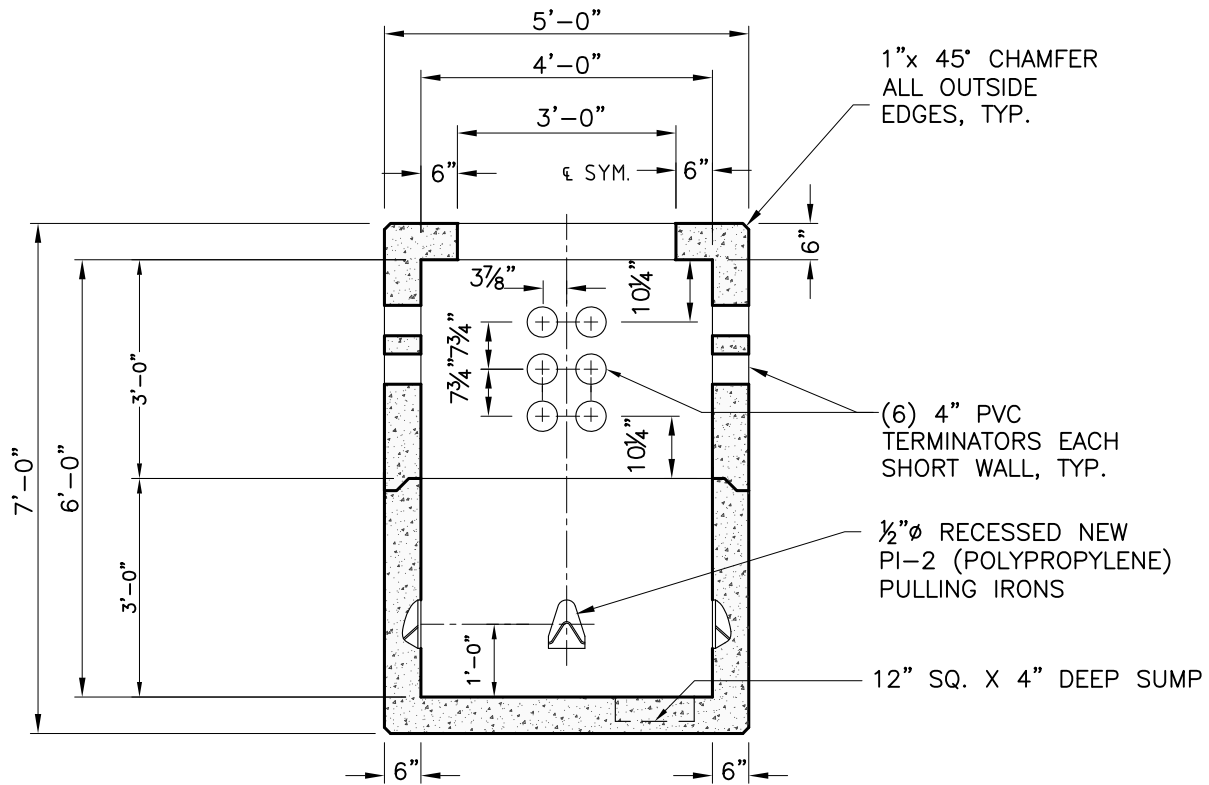
01/01/2013





SECTION A-A

OPPOSITE WALLS ARE MIRROR IMAGES.



SECTION B-B

OPPOSITE WALLS ARE MIRROR IMAGES.



New England's Premier Precaster

800-696-7432 (SHEA)

www.sheaconcrete.com

UTILITY MANHOLE
4'x8'x6'

773 Salem Street—Wilmington, MA 153 Cranberry Hwy—Rochester, MA
87 Haverhill Road—Amesbury, MA 160 Old Turnpike Rd—Nottingham, NH

Mail to: PO Box 520—Wilmington, MA 01887

Page: K2.10.2

UM 4x8x6.dwg

01/01/2013

