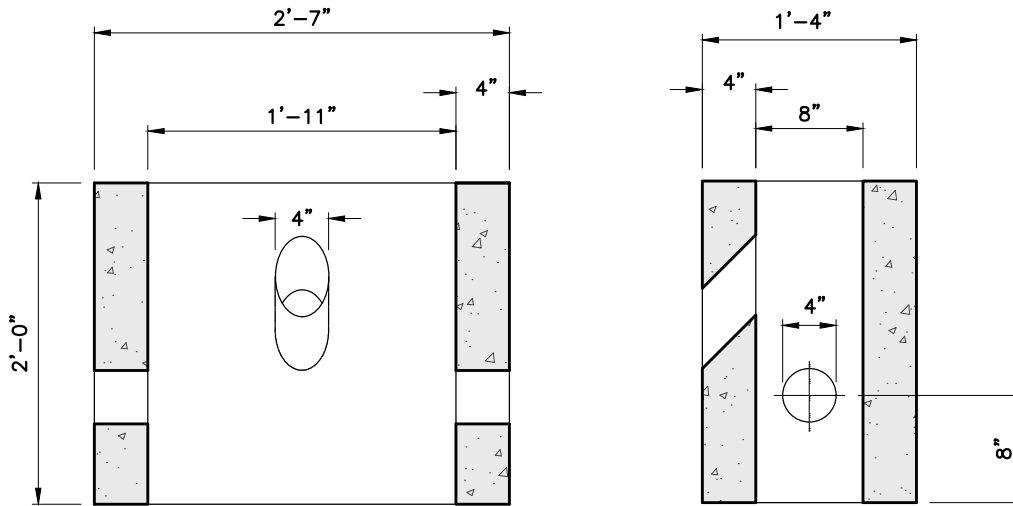


PLAN



SECTION A-A

SECTION B-B

NOTES:

1. CONCRETE: 5,000 PSI MINIMUM AFTER 28 DAYS.
2. DESIGN LOADING: AASHTO HS20-44, 0 TO 5 FEET COVER.
3. MEETS MADOT STANDARDS.

SHEA PRODUCT ID: PB-823MA

FILE NAME: SD2.030

WEIGHT (LBS): 630

DRAWN BY: L.P.

DATE: 5/9/2018

PAGE: VIII.E.4

