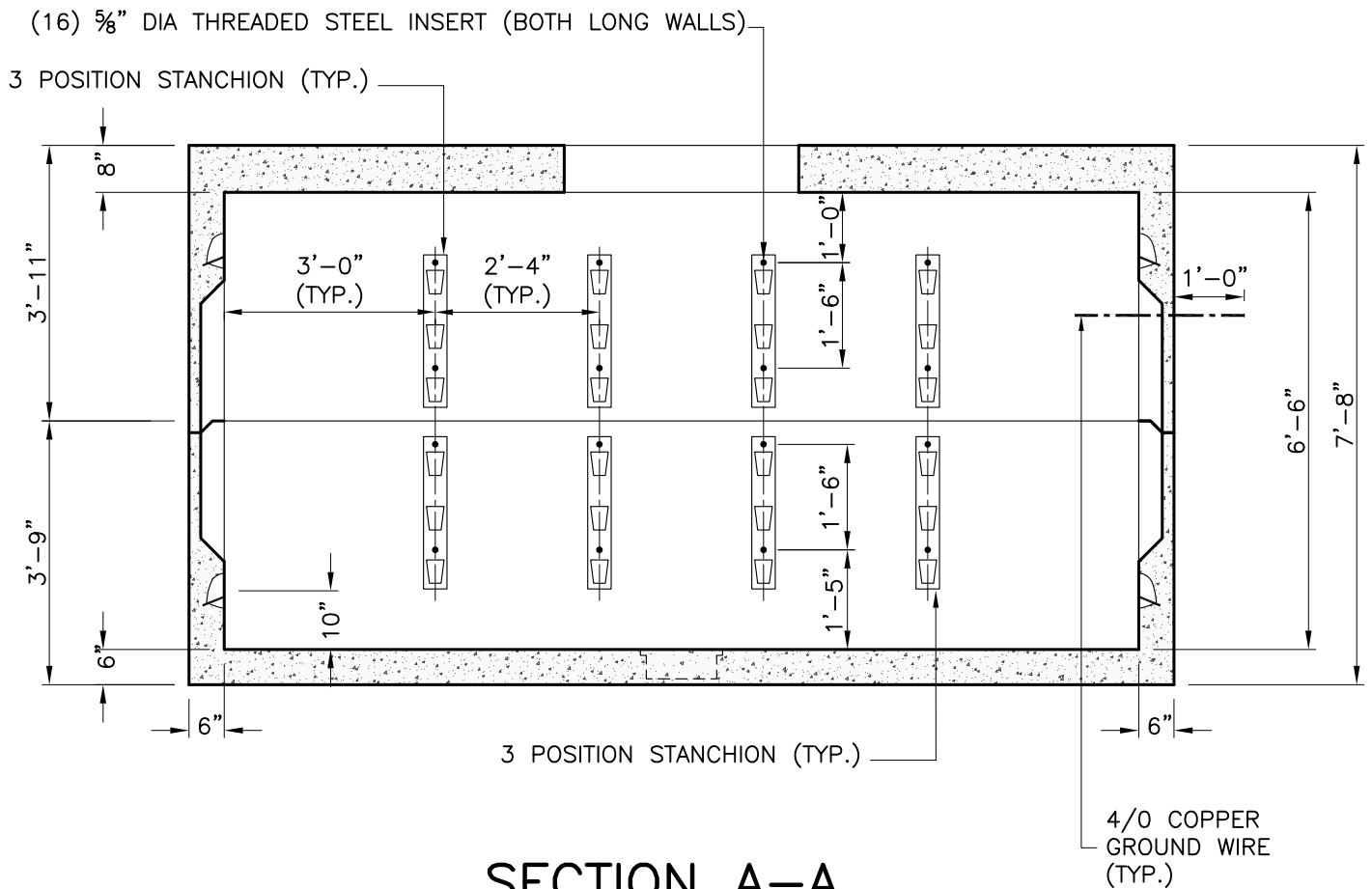


**PLAN**

- NOTES:
1. CONCRETE MINIMUM STRENGTH – 5,000 PSI @ 28 DAYS.
  2. STEEL REINFORCEMENT – ASTM A615, GRADE 60.
  3. MINIMUM STEEL COVER – 1-1/2 INCH TYPICAL
  4. DESIGN LOADING – AASHTO HS20-44.
  5. DESIGN SPECIFICATIONS – ACI 318 & AASHTO LOAD FACTOR DESIGN METHOD.
  6. ALL TERMINATORS SHALL HAVE BELL ENDS FLUSH WITH THE INSIDE WALL.
  7. TERMINATORS MAY BE SPECIFIED IN LIEU OF KNOCKOUTS AT THE DIRECTION OF NSTAR.
  8. CONSTRUCTION JOINT SHALL BE SEALED WITH 1"Ø BUTYL RUBBER OR APPROVED EQUAL.
  9. RACKING/STANCHIONS SOLD SEPARATELY.

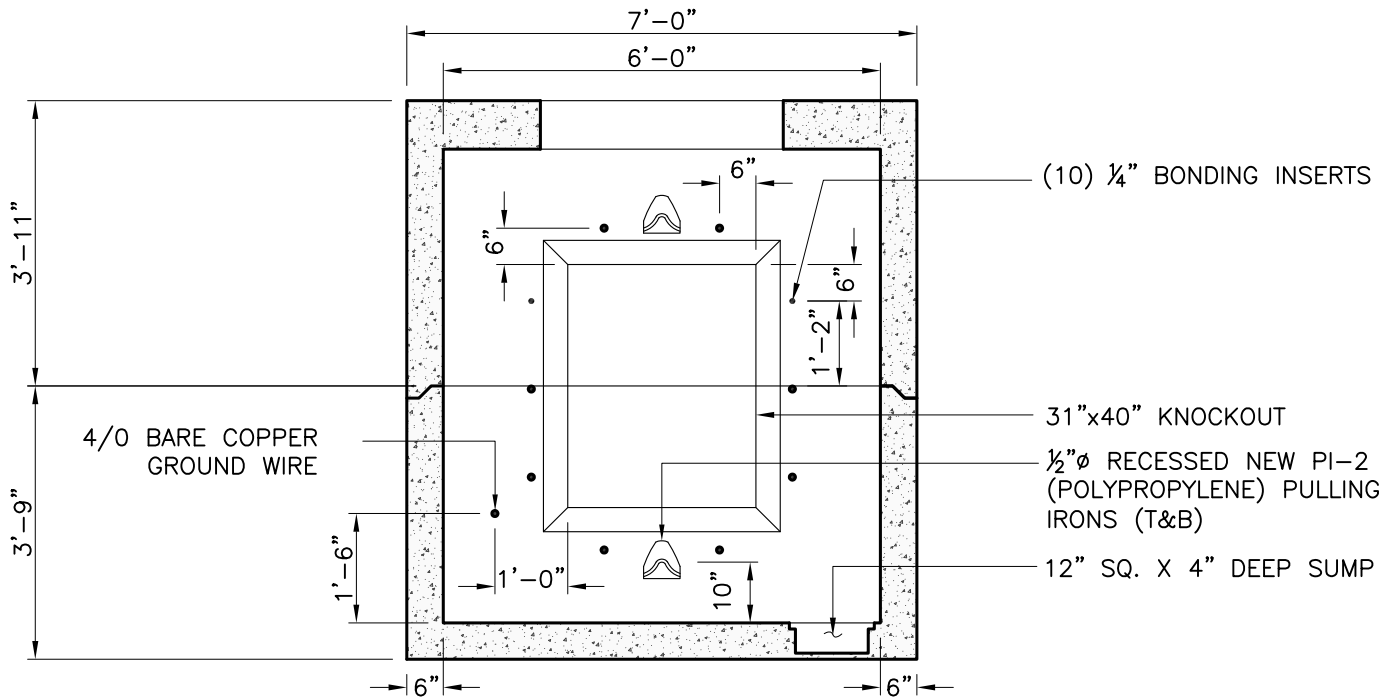
	<p><i>New England's Premier Precaster</i>          800-696-7432 (SHEA)          www.sheaconcrete.com</p>	<p><b>NSTAR UTILITY MANHOLE M1215</b>          6'-0"W x 13'-0"L x 6'-6"H</p>
<p>773 Salem Street—Wilmington, MA          87 Haverhill Road—Amesbury, MA</p>	<p>153 Cranberry Hwy—Rochester, MA          160 Old Turnpike Rd—Nottingham, NH</p>	<p>Page: K6.13.1          NSTAR UM 1215.dwg          01/01/2013</p>

Mail to: PO Box 520—Wilmington, MA 01887



### SECTION A-A

OPPOSITE WALLS ARE MIRROR IMAGES.



### SECTION B-B

OPPOSITE WALLS ARE MIRROR IMAGES.



New England's Premier Precaster

800-696-7432 (SHEA)

www.sheaconcrete.com

NSTAR UTILITY MANHOLE M1215

6'-0"W x 13'-0"L x 6'-6"H

773 Salem Street—Wilmington, MA  
87 Haverhill Road—Amesbury, MA

153 Cranberry Hwy—Rochester, MA  
160 Old Turnpike Rd—Nottingham, NH

Mail to: PO Box 520—Wilmington, MA 01887

Page: K6.13.2

NSTAR UM 1215.dwg

01/01/2013

