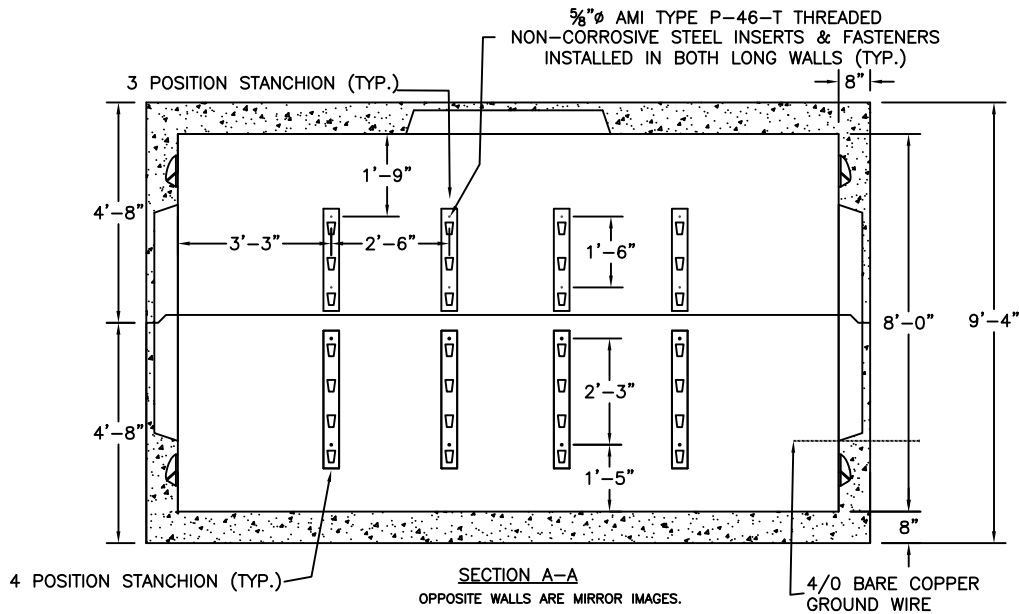
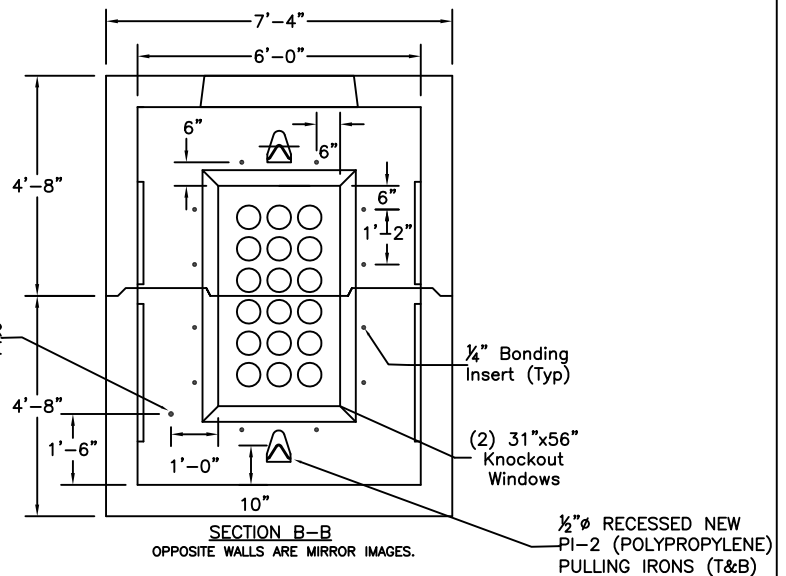


PLAN VIEW



SECTION A-A  
OPPOSITE WALLS ARE MIRROR IMAGES.



SECTION B-B  
OPPOSITE WALLS ARE MIRROR IMAGES.

NOTES:

1. CONCRETE MINIMUM STRENGTH 5,000 PSI AFTER 28 DAYS.
2. STEEL REINFORCEMENT - ASTM A615, GRADE 60.
3. MINIMUM STEEL COVER - 1-1/2 INCH.
4. DESIGN LOADING - AASHTO HS20-44.
5. DESIGN SPECIFICATIONS - ACI 318 & AASHTO LOAD FACTOR DESIGN METHOD.
6. ALL TERMAUCTS TO HAVE BELL ENDS FLUSH WITH THE INSIDE WALL.
7. CONSTRUCTION JOINT - SEALED WITH BUTYL RESIN.



New England's Premier Precaster  
800-696-7432 (SHEA)  
www.sheaconcrete.com

NSTAR MANHOLE M1213

6'-0"W x 14'-0"L x 8'-0"H INSIDE DIMENSIONS

773 Salem Street-Wilmington, MA 153 Cranberry Hwy-Rochester, MA  
87 Haverhill Road-Amesbury, MA 160 Old Turnpike Rd-Nottingham, NH  
Mail to: PO Box 520-Wilmington, MA 01887

Page: K6.13

5/5/2010

NSTAR M1213.dwg

