

PLAN

NOTES:

1. CONCRETE MINIMUM STRENGTH - 5,000 PSI @ 28 DAYS.
2. STEEL REINFORCEMENT - ASTM A615, GRADE 60.
3. MINIMUM STEEL COVER - 1-1/2 INCH TYPICAL
4. DESIGN LOADING - AASHTO HS20-44.
5. DESIGN SPECIFICATIONS - ACI 318 & AASHTO LOAD FACTOR DESIGN METHOD.
6. ALL TERMINATORS SHALL HAVE BELL ENDS FLUSH WITH THE INSIDE WALL.
7. TERMINATORS MAY BE SPECIFIED IN LIEU OF KNOCKOUTS AT THE DIRECTION OF NSTAR.
8. CONSTRUCTION JOINT SHALL BE SEALED WITH 1"Ø BUTYL RUBBER OR APPROVED EQUAL.
9. RACKING/STANCHIONS SOLD SEPARATELY.



New England's Premier Precaster
 800-696-7432 (SHEA)
 www.sheaconcrete.com

NSTAR UTILITY MANHOLE M1212
 10'-0"W x 13'-0"L x 8'-0"H

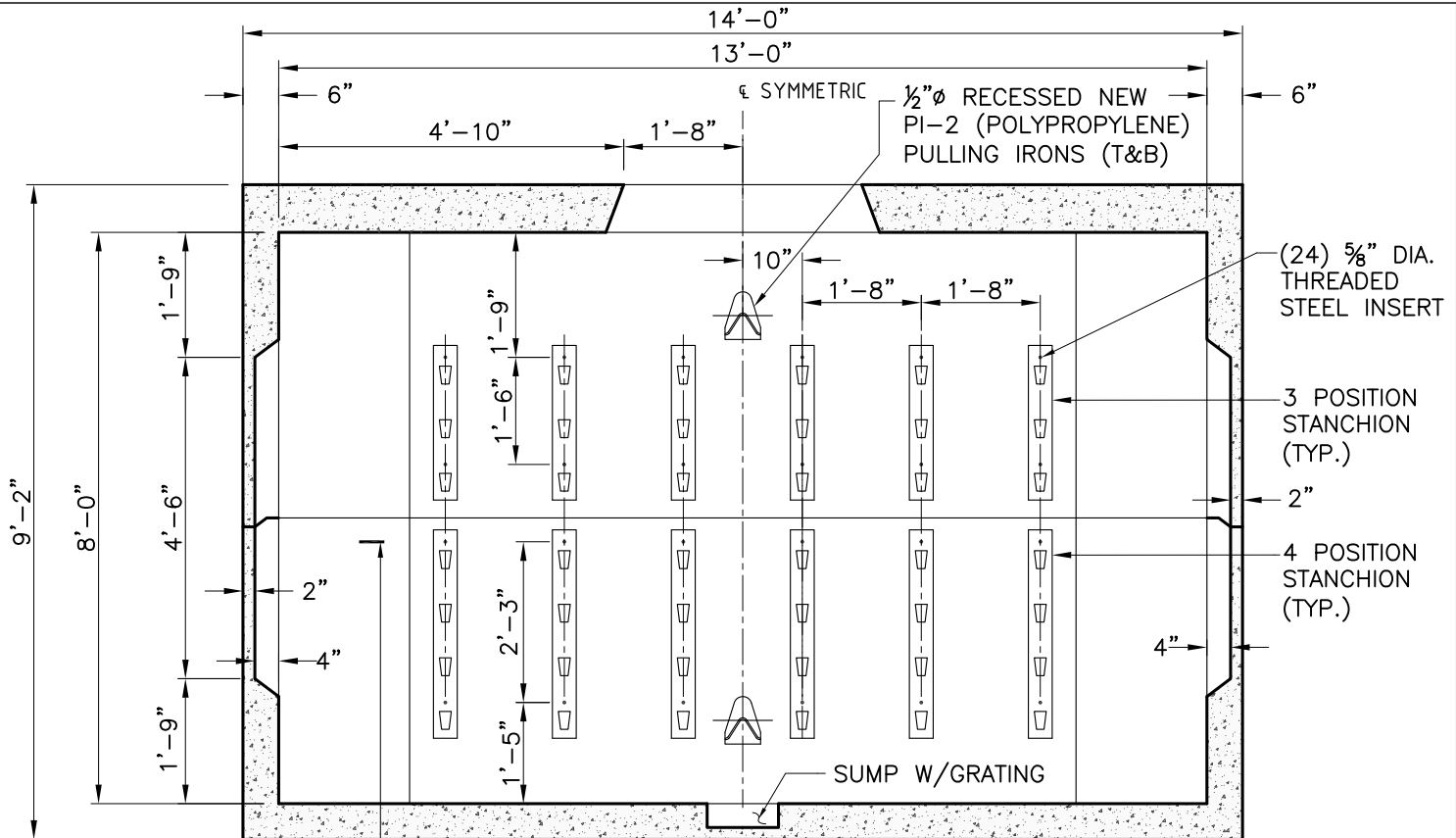
773 Salem Street-Wilmington, MA 153 Cranberry Hwy-Rochester, MA
 87 Haverhill Road-Amesbury, MA 160 Old Turnpike Rd-Nottingham, NH
 Mail to: PO Box 520-Wilmington, MA 01887

Page: K6.11.1

NSTAR UM 1212.dwg

01/01/2013

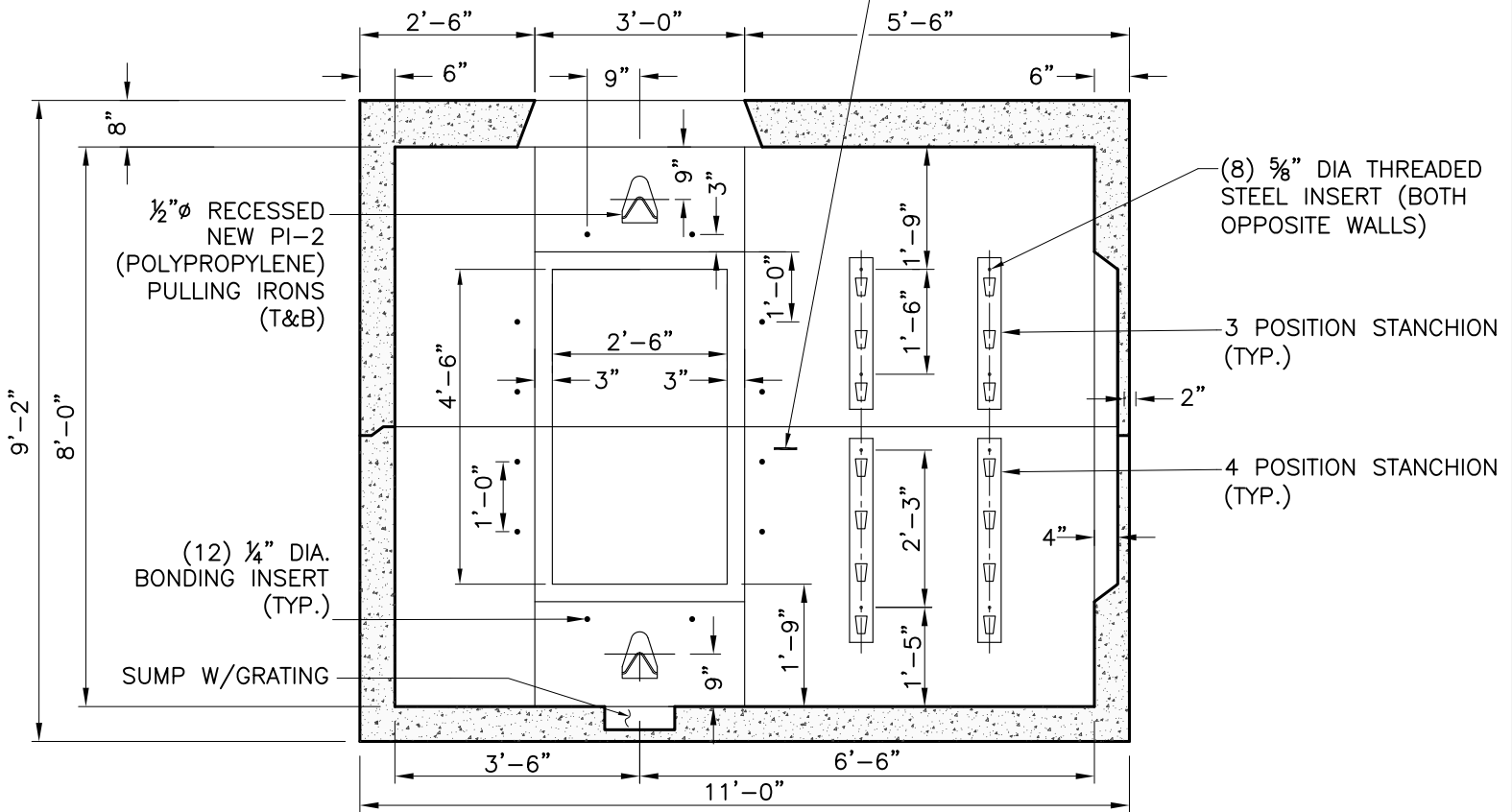




SECTION A-A

4/0 COPPER GROUND WIRE
(SEE PLAN FOR LOCATIONS, TYP.)

4/0 COPPER GROUND WIRE, (TYP.)



SECTION B-B

OPPOSITE WALLS ARE MIRROR IMAGES.



New England's Premier Precaster
800-696-7432 (SHEA)
www.sheaconcrete.com

NSTAR UTILITY MANHOLE M1212
10'-0"W x 13'-0"L x 8'-0"H

773 Salem Street—Wilmington, MA 153 Cranberry Hwy—Rochester, MA
87 Haverhill Road—Amesbury, MA 160 Old Turnpike Rd—Nottingham, NH
Mail to: PO Box 520—Wilmington, MA 01887

