

PLAN

NOTES:

1. CONCRETE MINIMUM STRENGTH - 5,000 PSI @ 28 DAYS.
2. STEEL REINFORCEMENT - ASTM A615, GRADE 60.
3. MINIMUM STEEL COVER - 1-1/2 INCH TYPICAL
4. DESIGN LOADING - AASHTO HS20-44.
5. DESIGN SPECIFICATIONS - ACI 318 & AASHTO LOAD FACTOR DESIGN METHOD.
6. ALL TERMINATORS SHALL HAVE BELL ENDS FLUSH WITH THE INSIDE WALL.
7. TERMINATORS MAY BE SPECIFIED IN LIEU OF KNOCKOUTS AT THE DIRECTION OF NSTAR.
8. CONSTRUCTION JOINT SHALL BE SEALED WITH 1"Ø BUTYL RUBBER OR APPROVED EQUAL.
9. RACKING/STANCHIONS SOLD SEPARATELY.

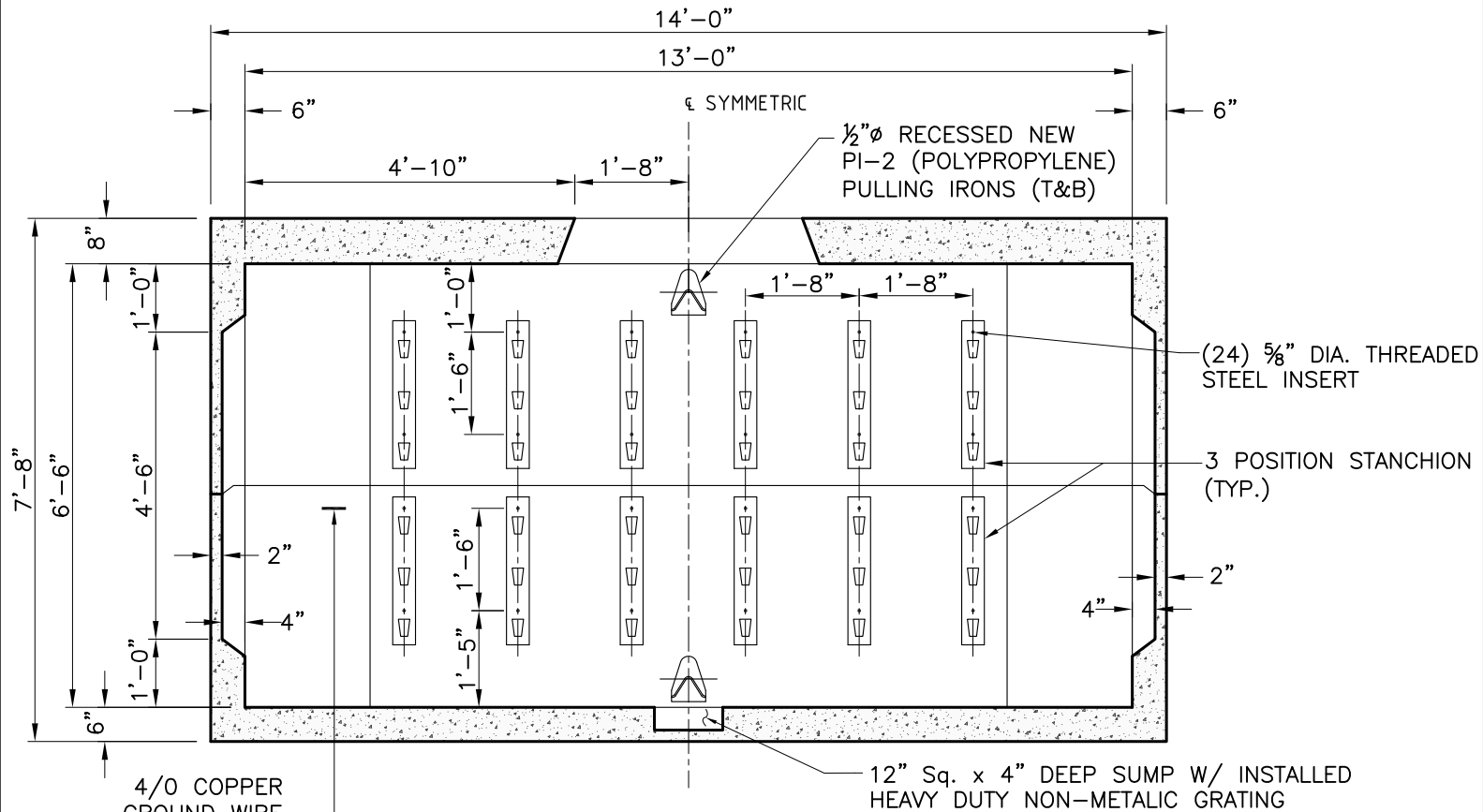
SHEA *New England's Premier Precaster*
CONCRETE PRODUCTS
 800-696-7432 (SHEA)
 www.sheaconcrete.com

773 Salem Street-Wilmington, MA 01887
 153 Cranberry Hwy-Rochester, MA 01887
 87 Haverhill Road-Amesbury, MA 01825
 160 Old Turnpike Rd-Nottingham, NH 03255
 Mail to: PO Box 520-Wilmington, MA 01887

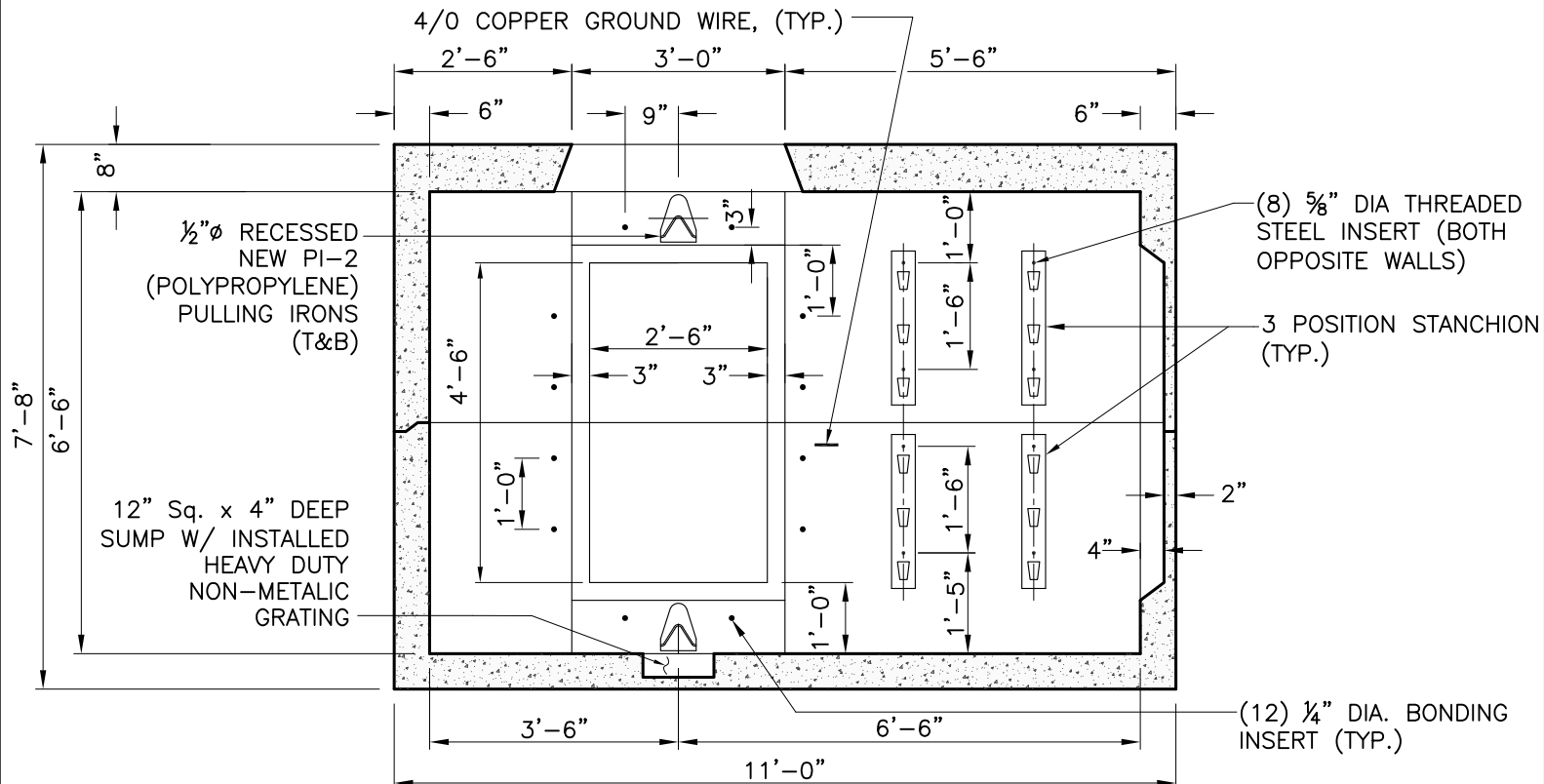
NSTAR UTILITY MANHOLE M1211
 10'-0"W x 13'-0"L x 6'-6"H

Page: K6.10.1
 NSTAR UM 1211.dwg
 01/01/2013

NPCA
 CERTIFIED PLANT



SECTION A-A



SECTION B-B

OPPOSITE WALLS ARE MIRROR IMAGES.

	<p><i>New England's Premier Precaster</i> 800-696-7432 (SHEA) www.sheaconcrete.com</p>	<p>NSTAR UTILITY MANHOLE M1211 10'-0"W x 13'-0"L x 6'-6"H</p>
--	--	---