


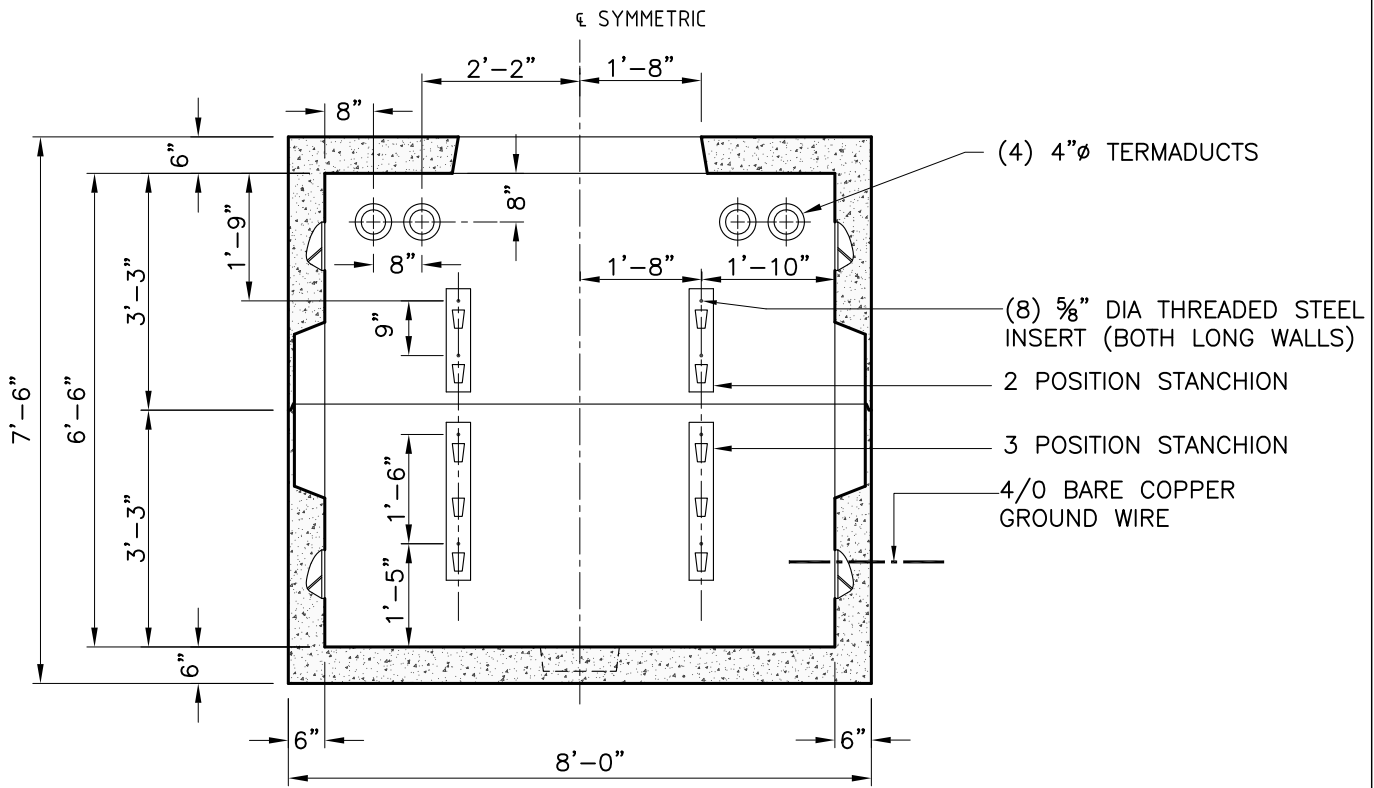
PLAN

NOTES:

- | | |
|---|---|
| <ol style="list-style-type: none"> 1. CONCRETE MINIMUM STRENGTH – 5,000 PSI @ 28 DAYS. 2. STEEL REINFORCEMENT – ASTM A615, GRADE 60. 3. MINIMUM STEEL COVER – 1-1/2 INCH TYPICAL 4. DESIGN LOADING – AASHTO HS20-44. 5. DESIGN SPECIFICATIONS – ACI 318 & AASHTO LOAD FACTOR DESIGN METHOD. 6. ALL TERMINATORS SHALL HAVE BELL ENDS FLUSH WITH THE INSIDE WALL. | <ol style="list-style-type: none"> 7. TERMINATORS MAY BE SPECIFIED IN LIEU OF KNOCKOUTS AT THE DIRECTION OF NSTAR. 8. CONSTRUCTION JOINT SHALL BE SEALED WITH 1"Ø BUTYL RUBBER OR APPROVED EQUAL. 9. RACKING/STANCHIONS SOLD SEPARATELY. |
|---|---|

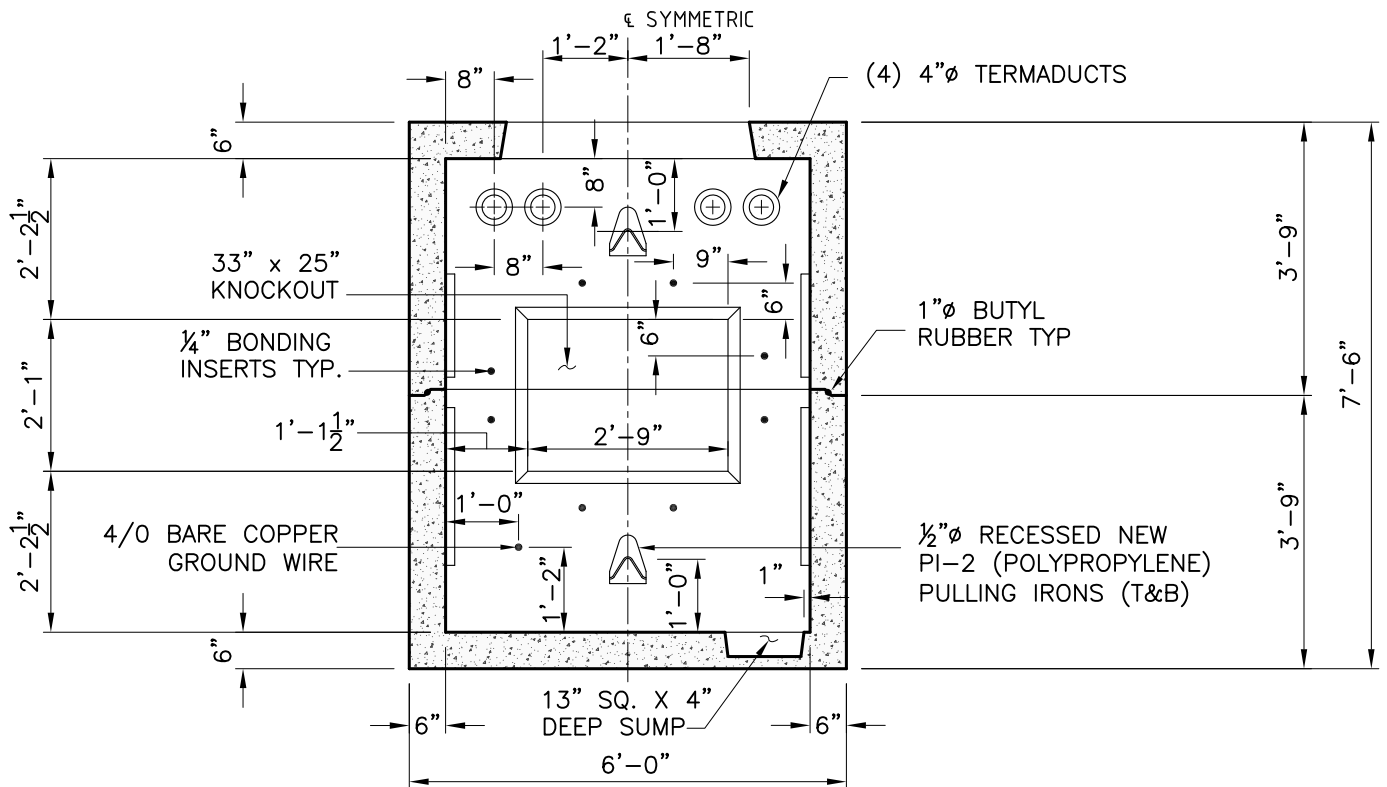
	<p style="text-align: center;"><i>New England's Premier Precaster</i></p> <p style="text-align: center;">800-696-7432 (SHEA) www.sheaconcrete.com</p>
<p>773 Salem Street—Wilmington, MA 87 Haverhill Road—Amesbury, MA</p>	<p>153 Cranberry Hwy—Rochester, MA 160 Old Turnpike Rd—Nottingham, NH</p>
<p>Mail to: PO Box 520—Wilmington, MA 01887</p>	

<p>NSTAR UTILITY MANHOLE M1209 5'-0"W x 7'-0"L x 6'-6"H</p>
<p>Page: K6.8.1</p>
<p>NSTAR UM 1209.dwg</p>
<p>01/01/2013</p>




SECTION A-A

OPPOSITE WALLS ARE MIRROR IMAGES.



SECTION B-B

OPPOSITE WALLS ARE MIRROR IMAGES.



New England's Premier Precaster
 800-696-7432 (SHEA)
 www.sheaconcrete.com

NSTAR UTILITY MANHOLE M1209
 5'-0"W x 7'-0"L x 6'-6"H

773 Salem Street—Wilmington, MA 153 Cranberry Hwy—Rochester, MA
 87 Haverhill Road—Amesbury, MA 160 Old Turnpike Rd—Nottingham, NH
 Mail to: PO Box 520—Wilmington, MA 01887

Page: K6.8.2

NSTAR UM 1209.dwg

01/01/2013

