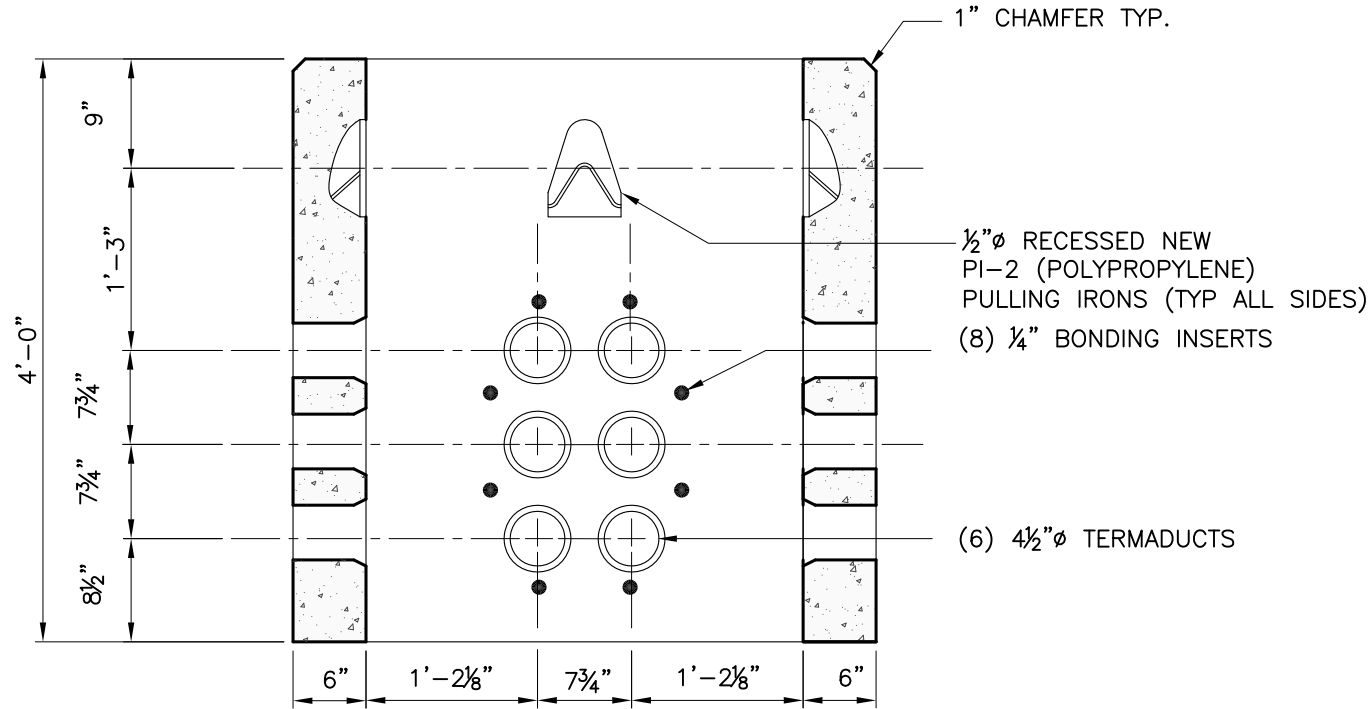


PLAN



SECTION A-A

OPEN TOP & BOTTOM (ALL WALLS ARE SIMILAR)

- NOTES:
1. CONCRETE MINI. STRENGTH - 5,000 PSI @ 28 DAYS.
 2. STEEL REINFORCEMENT - ASTM A615, GRADE 60.
 3. MINIMUM STEEL COVER - 1-1/2 INCH TYPICAL
 4. DESIGN LOADING - AASHTO HS20-44.
 5. DESIGN SPECIFICATIONS - ACI 318 & AASHTO LOAD FACTOR DESIGN METHOD
 6. TERMINATORS SHALL HAVE BELL ENDS FLUSH WITH INSIDE WALL.
 7. TERMINATORS MAY BE SPECIFIED IN LIEU OF KNOCKOUTS AT THE DIRECTION OF NSTAR.
 8. CONSTRUCTION JOINT SHALL BE SEALED WITH 1"Ø BUTYL RUBBER OR APPROVED EQUAL.
 9. RACKING/STANCHIONS SOLD SEPARATELY.



New England's Premier Precaster
 800-696-7432 (SHEA)
 www.sheaconcrete.com

NSTAR UTILITY MANHOLE M1207
 3'-0"W x 3'-0"L x 4'-0"H

773 Salem Street-Wilmington, MA 153 Cranberry Hwy-Rochester, MA
 87 Haverhill Road-Amesbury, MA 160 Old Turnpike Rd-Nottingham, NH
 Mail to: PO Box 520-Wilmington, MA 01887