

PLAN

NOTES:

1. CONCRETE MINIMUM STRENGTH 5,000 PSI AFTER 28 DAYS.
2. STEEL REINFORCEMENT – ASTM A615, GRADE 60.
3. MINIMUM STEEL COVER – 1-1/2 INCH.
4. DESIGN LOADING – AASHTO HS20-44.
5. DESIGN SPECIFICATIONS – ACI 318 & AASHTO LOAD FACTOR DESIGN METHOD.
6. ALL TERMADUCTS TO HAVE BELL ENDS FLUSH WITH THE INSIDE WALL.
7. CONSTRUCTION JOINT – SEALED WITH 1" DIAMETER BUTYL RUBBER OR ACMELITE SEALANT.



New England's Premier Precaster
 800-696-7432 (SHEA)
 www.sheaconcrete.com

NSTAR UTILITY MANHOLE M1203
 6'-0"W x 10'-0"L x 6'-0"H

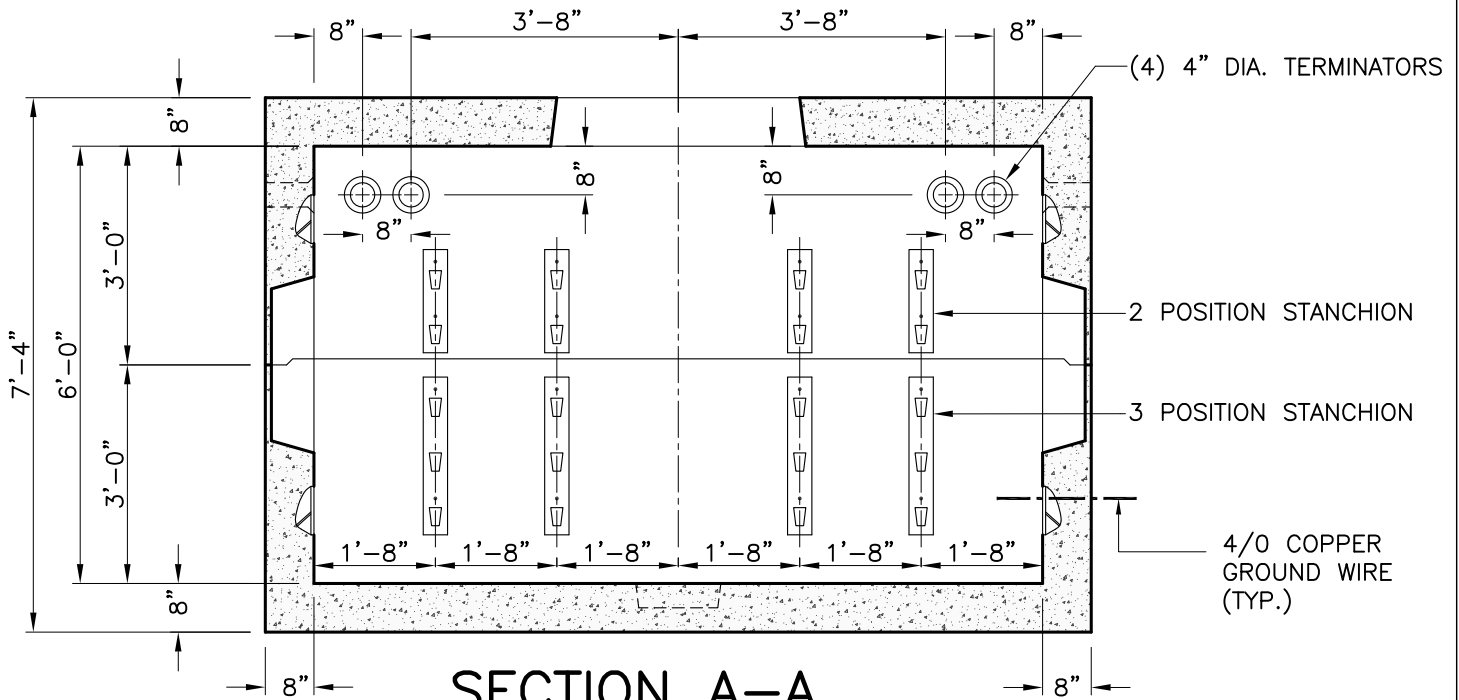
773 Salem Street—Wilmington, MA 153 Cranberry Hwy—Rochester, MA
 87 Haverhill Road—Amesbury, MA 160 Old Turnpike Rd—Nottingham, NH
 Mail to: PO Box 520—Wilmington, MA 01887

Page: K6.3.1

NSTAR UM 1203.dwg

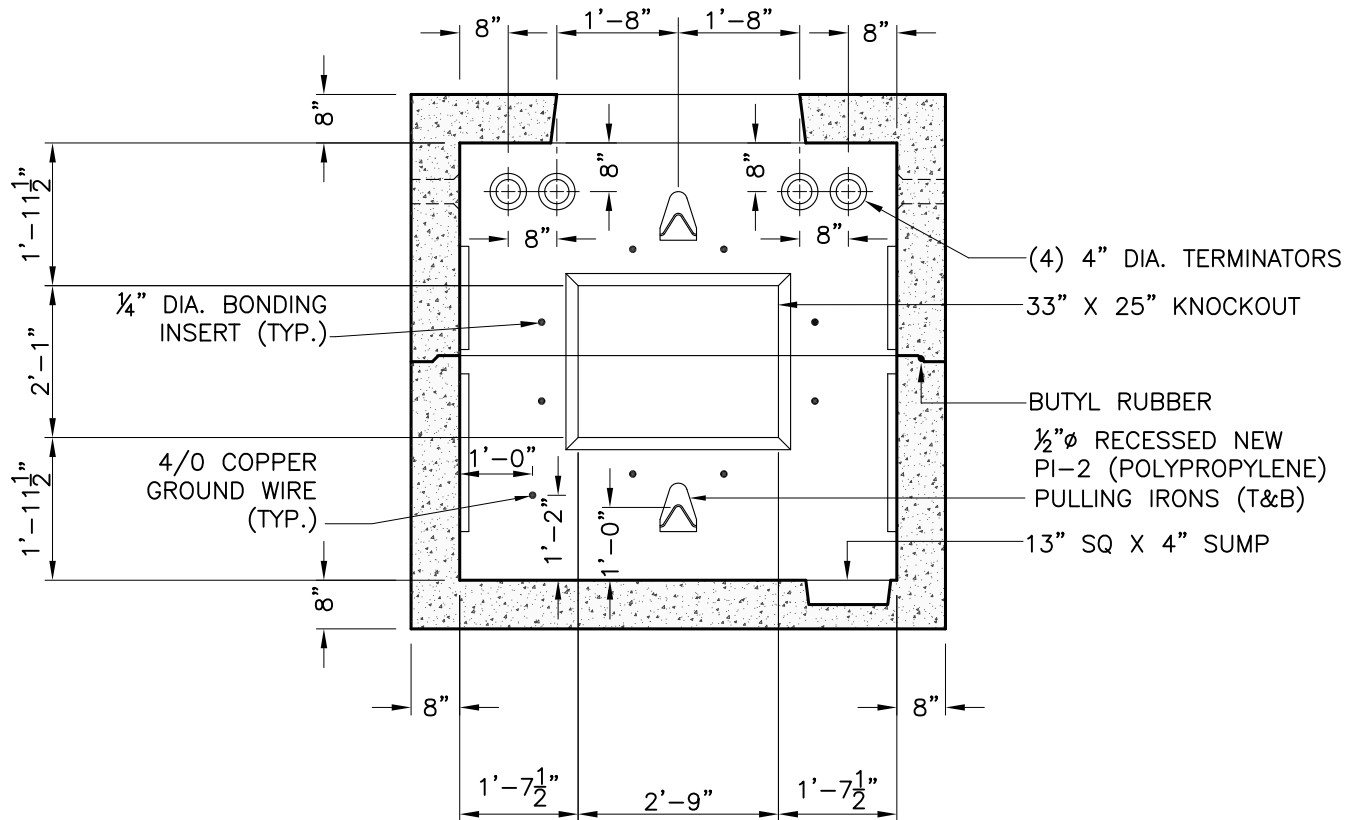
01/01/2013





SECTION A-A

OPPOSITE WALLS ARE MIRROR IMAGES.



SECTION B-B

OPPOSITE WALLS ARE MIRROR IMAGES.



New England's Premier Precaster

800-696-7432 (SHEA)

www.sheaconcrete.com

NSTAR UTILITY MANHOLE M1203
6'-0"W x 10'-0"L x 6'-0"H

773 Salem Street—Wilmington, MA
87 Haverhill Road—Amesbury, MA

153 Cranberry Hwy—Rochester, MA
160 Old Turnpike Rd—Nottingham, NH

Mail to: PO Box 520—Wilmington, MA 01887

Page: K6.3.2

NSTAR UM 1203.dwg

01/01/2013

