

**PLAN**

NOTES:

1. CONCRETE MINIMUM STRENGTH 5,000 PSI AFTER 28 DAYS.
2. STEEL REINFORCEMENT – ASTM A615, GRADE 60, 1" MIN. COVER.
3. DESIGN LOADING – AASHTO HS20-44, COVER 0 TO 5FT.
4. TONGUE & GROOVE JOINT SEALED WITH BUTYL RESIN.
5. DESIGNED IN ACCORDANCE WITH ASTM C-857 AND C-858.

ITEM	WEIGHT
NO. NG-613-66SG	34,300 LBS

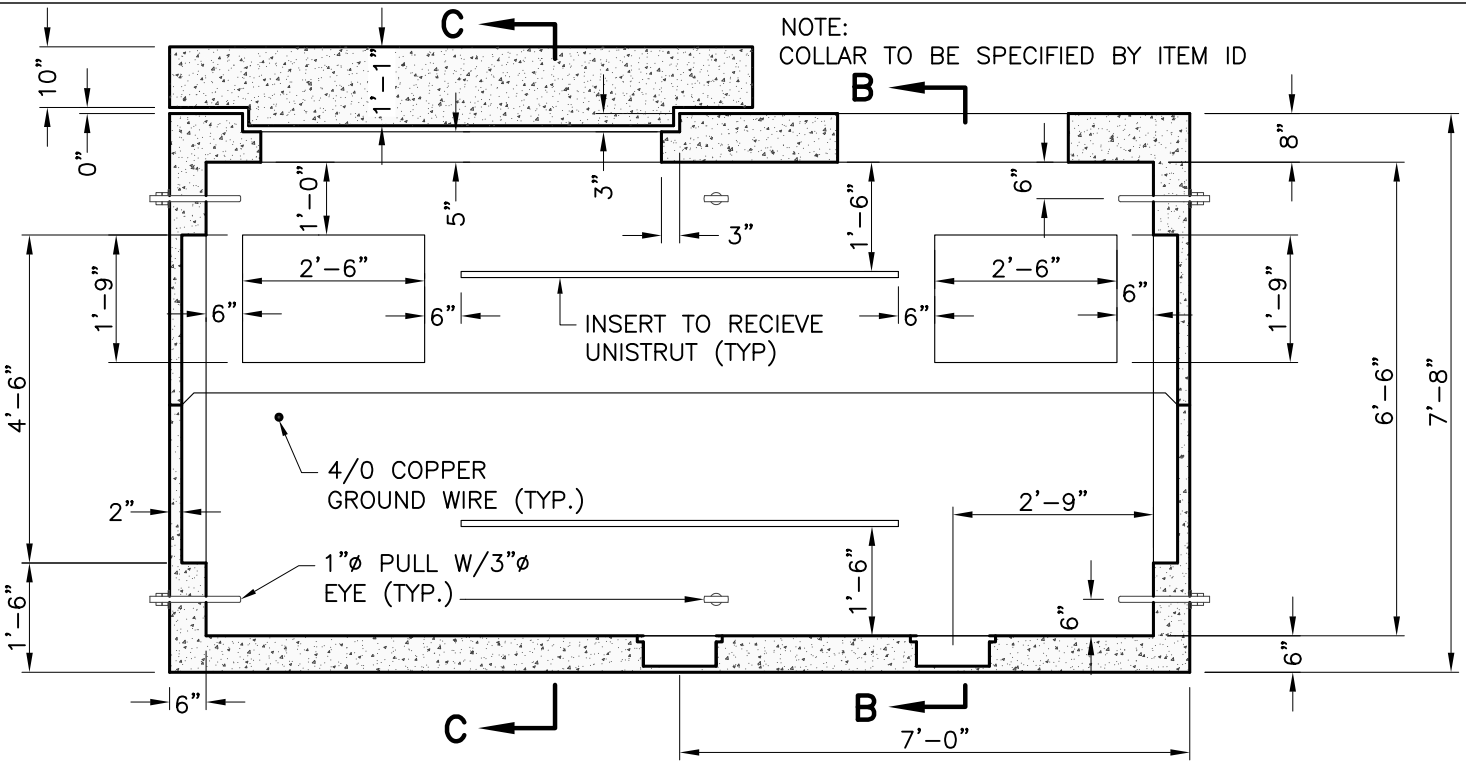


*New England's Premier Precaster*  
 800-696-7432 (SHEA)  
 www.sheaconcrete.com

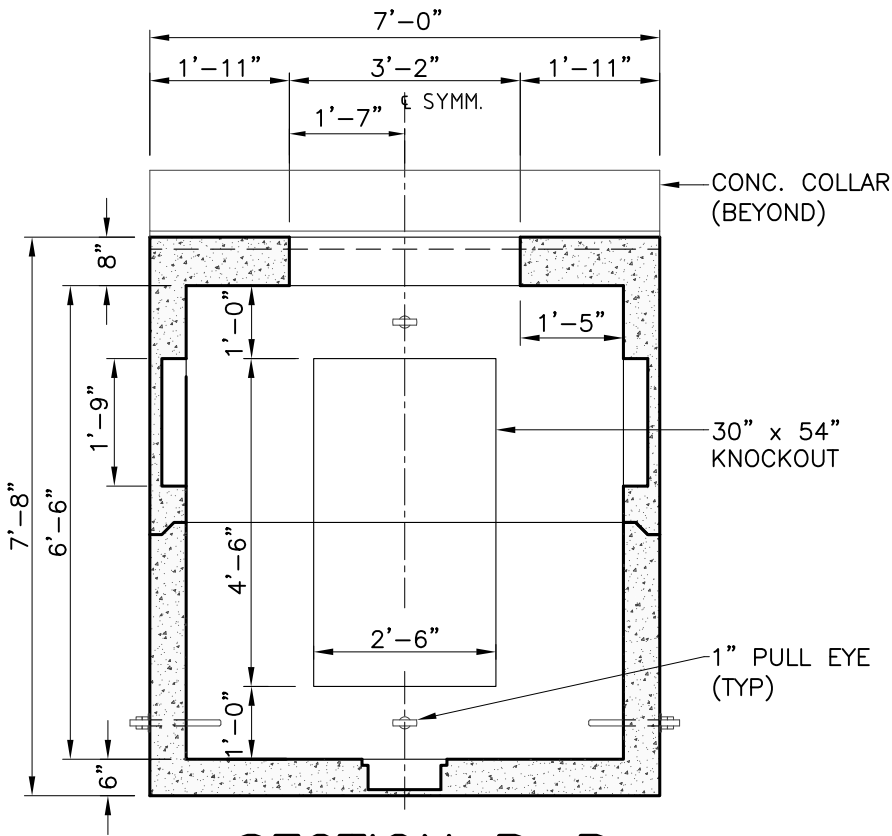
**NATIONAL GRID  
 SWITCHGEAR MANHOLE**

773 Salem Street—Wilmington, MA 153 Cranberry Hwy—Rochester, MA  
 87 Haverhill Road—Amesbury, MA 160 Old Turnpike Rd—Nottingham, NH  
 Mail to: PO Box 520—Wilmington, MA 01887

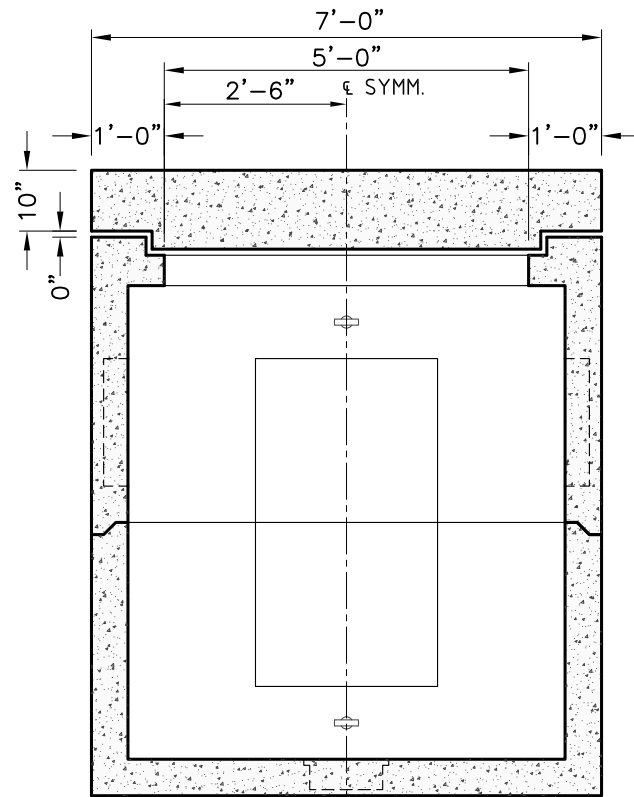




OPPOSITE WALLS ARE MIRROR IMAGES.



OPPOSITE WALLS ARE MIRROR IMAGES.



SEE SECTION B-B FOR DIMENSIONAL INFORMATION NOT SHOWN



New England's Premier Precaster  
800-696-7432 (SHEA)  
www.sheaconcrete.com

NATIONAL GRID  
SWITCHGEAR MANHOLE

773 Salem Street-Wilmington, MA 153 Cranberry Hwy-Rochester, MA  
87 Haverhill Road-Amesbury, MA 160 Old Turnpike Rd-Nottingham, NH  
Mail to: PO Box 520-Wilmington, MA 01887

Page: K5.9.2

NGSwitchgearMH.dwg

01/01/2013

