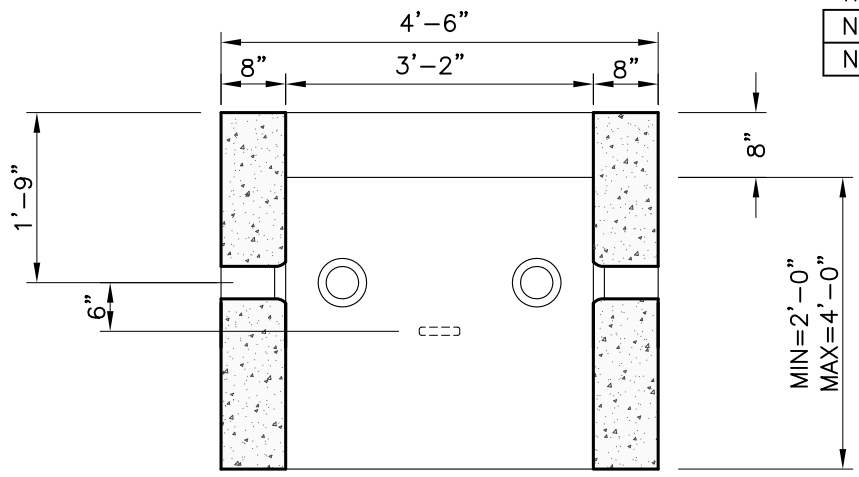


SECTION A-A



SECTION B-B

ITEM NO.	WEIGHT
NGHH38X54-24	5,100 LBS
NGHH38X54-48	8,600 LBS

NOTES:

1. CONCRETE MINIMUM STRENGTH 4,000 PSI AFTER 28 DAYS.
2. DESIGNED FOR H-10 LOADING.
3. BUTYL RESIN JOINT CONFORMS TO LATEST ASTM C443 SPEC.
4. AVAILABLE WITH OR WITHOUT PULLING EYES.
5. OTHER HEIGHTS ALSO AVAILABLE.



New England's Premier Precaster
 800-696-7432 (SHEA)
 www.sheaconcrete.com

**NATIONAL GRID
 HANDHOLE 3'-2" x 4'-6"**

773 Salem Street—Wilmington, MA 153 Cranberry Hwy—Rochester, MA
 87 Haverhill Road—Amesbury, MA 160 Old Turnpike Rd—Nottingham, NH
 Mail to: PO Box 520—Wilmington, MA 01887

