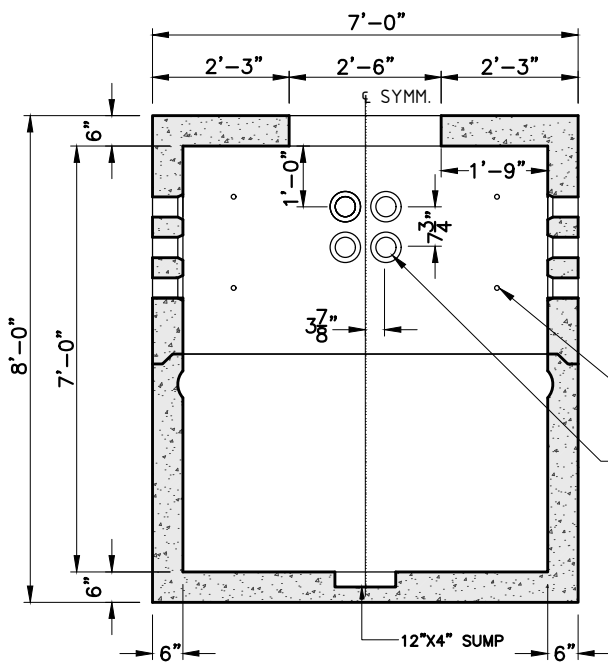
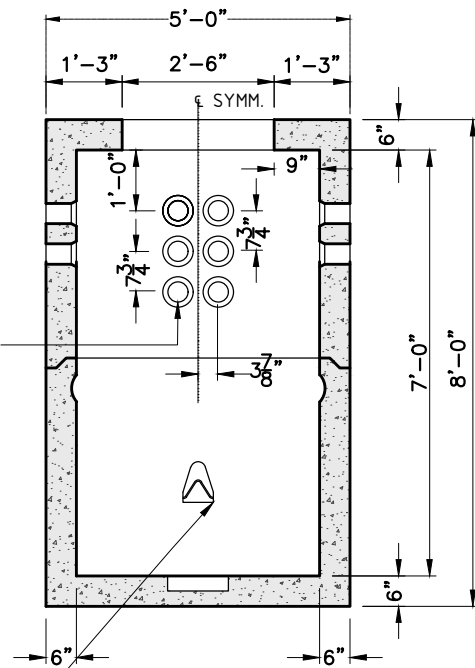


**PLAN**



**SECTION A-A**  
 OPPOSITE WALL SIMILAR



**SECTION B-B**  
 OPPOSITE WALL SIMILAR

1/2"  $\phi$  RECESSED NEW  
 PI-2 (POLYPROPYLENE)  
 PULLING IRONS

**NOTES:**

1. CONCRETE: 5,000 PSI MINIMUM AFTER 28 DAYS.
2. DESIGN LOADING: AASHTO HS20-44, 0 TO 5 FEET COVER.
3. STEEL REINFORCEMENT CONFORMS TO ASTM A615, GRADE 60.
4. MINIMUM STEEL COVER 1".

SHEA PRODUCT ID: MH-467

FILE NAME: MH 4X6X7

WEIGHT (LBS): 14290

DRAWN BY: L.P.

DATE: 2/5/2018

PAGE: I.C.4

