

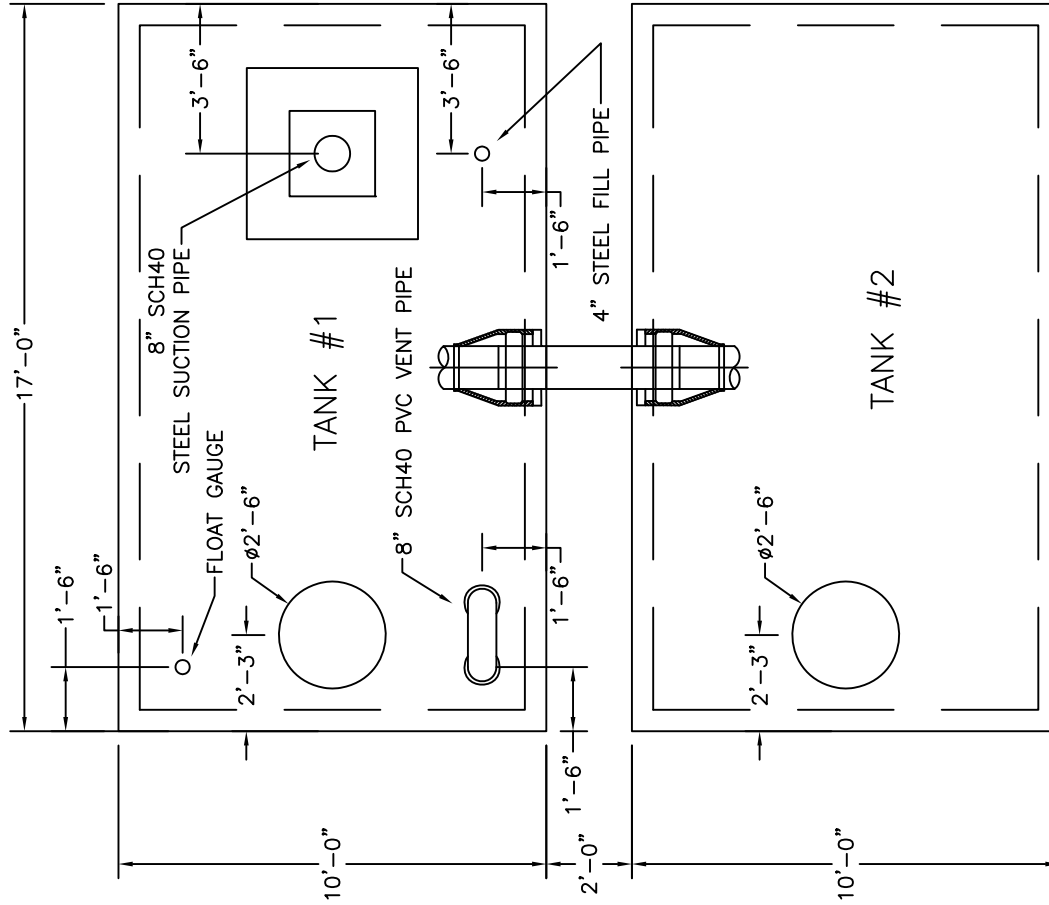
**BACKFILL NOTES:**

- 1) FOUNDATION MATERIAL SHALL BE ¾" CRUSHED STONE, MINIMUM 12" THICK.
- 2) BACKFILL MATERIAL SHALL BE NO GREATER THAN 1½" AND SHALL BE COMPACTED TO 95% PROCTOR. ALL COMPACTION TO BE DONE WITH HAND-OPERATED EQUIPMENT.
- 3) ALL AREAS BETWEEN TANKS SHALL BE FILLED TO A MINIMUM OF 12" ABOVE CROWN OF INTERCONNECTION PIPE WITH ¾" CRUSHED STONE.
- 4) ALL BACKFILL MATERIAL AROUND AND BETWEEN TANKS SHALL BE PLACED IN 12" LIFTS EVENLY ON ALL SIDES.
- 5) 2" INSULATION IS REQUIRED IF THE FILL OVER THE FIRE CISTERN IS LESS THAN 4 FEET. SUPPLIED BY OTHERS.

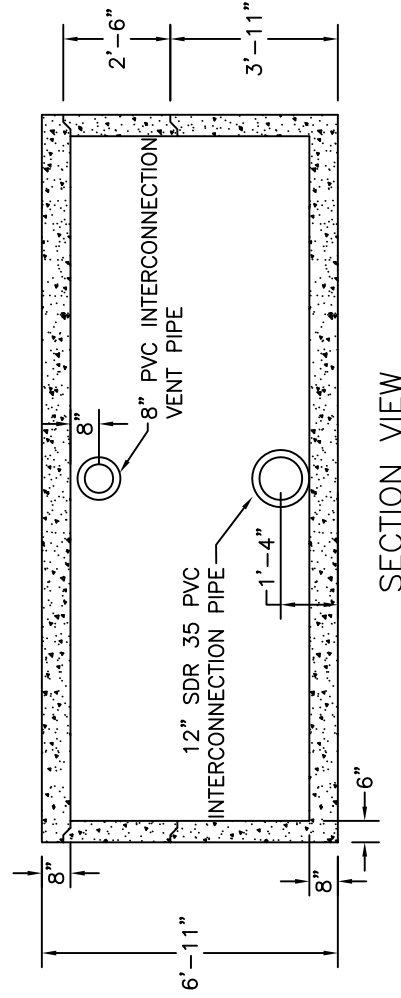
**NOTES:**

- 1) CONCRETE: 5,000 PSI MINIMUM AFTER 28 DAYS.
- 2) REINFORCING PER ASTM-615, GRADE 60 MINIMUM 1" COVER.
- 3) DESIGNED FOR AASHTO HS20-44 LOADING, COVER 1 TO 5 FEET.
- 4) TONGUE AND GROOVE JOINT SEALED WITH BUTYL RESIN PER ASTM C990. OVERALL HEIGHT MAY INCREASE SLIGHTLY DUE TO THE BUTYL RESIN USED.
- 5) EXTERIOR COATED.

ROAD WAY



PLAN VIEW



SECTION VIEW

10,000 GALLON FIRE CISTERN SHOWN  
OTHER SIZES AVAILABLE



New England's Premier Precaster  
800-696-7432 (SHEA)  
www.sheaconcrete.com

773 Salem Street  
P.O. Box 520  
Wilmington, MA 01887

87 Haverhill Road  
P.O. Box 807  
Nottingham, NH 03290

FIRE CISTERN

Page: M10 6/17/2011

Firecistern.dwg

