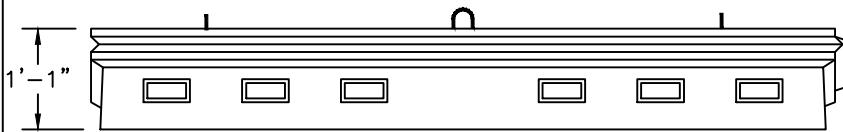
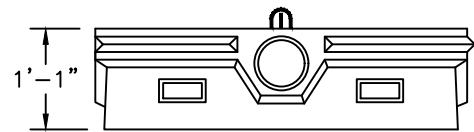


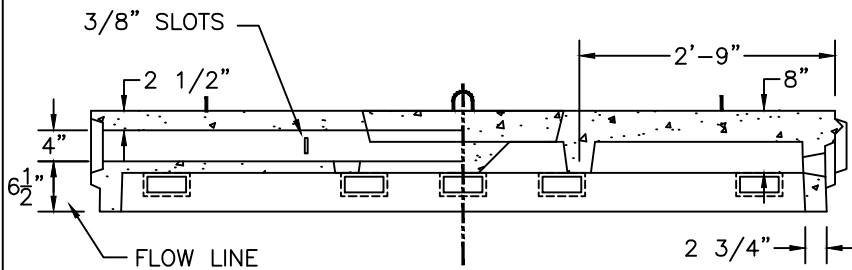
PLAN VIEW



SIDE VIEW

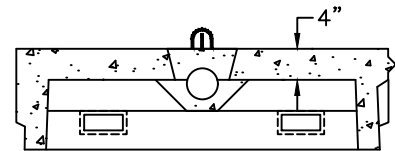


END VIEW



SIDE SECTION VIEW

AA




END SECTION VIEW

BB

NOTES:

1. CONCRETE: 4,000 PSI MINIMUM AFTER 28 DAYS.
2. REINFORCED STEEL CONFORMS TO LATEST ASTM SPEC.
3. DESIGNED FOR AASHTO HS-20 LOADING, 1 TO 5 FEET COVER.

SHEA PRODUCT ID: FDLLP	PREPARED FOR:	FILE NAME: Fdlp_L.dwg	
WEIGHT (LBS): 2,615#	DRAWN BY: ARO	DATE: 06/01/18	
773 Salem Street-Wilmington, MA 153 Cranberry Hwy-Rochester, MA 87 Haverhill Road-Amesbury, MA 160 Old Turnpike Rd-Nottingham, NH			