

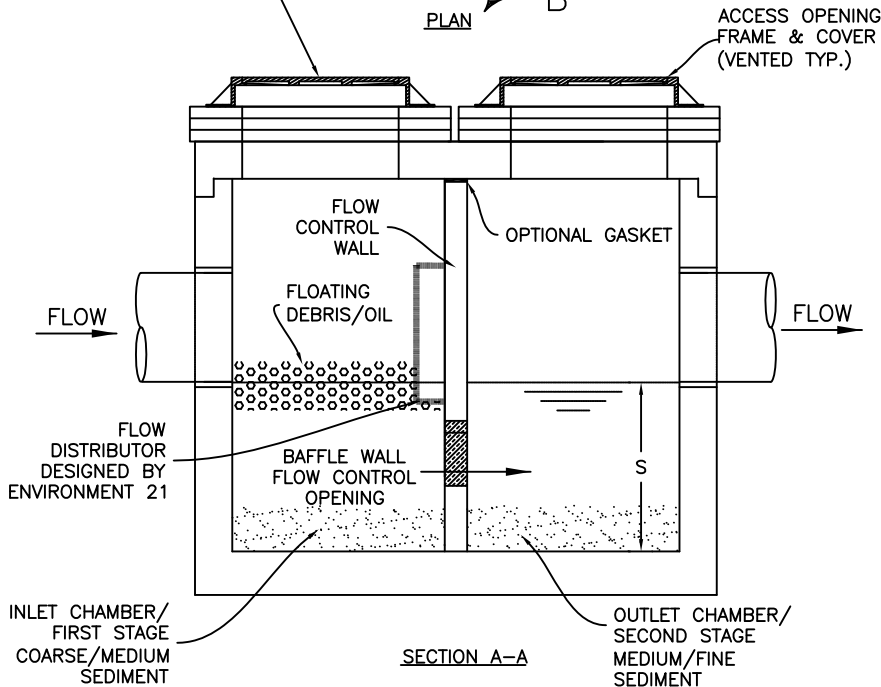
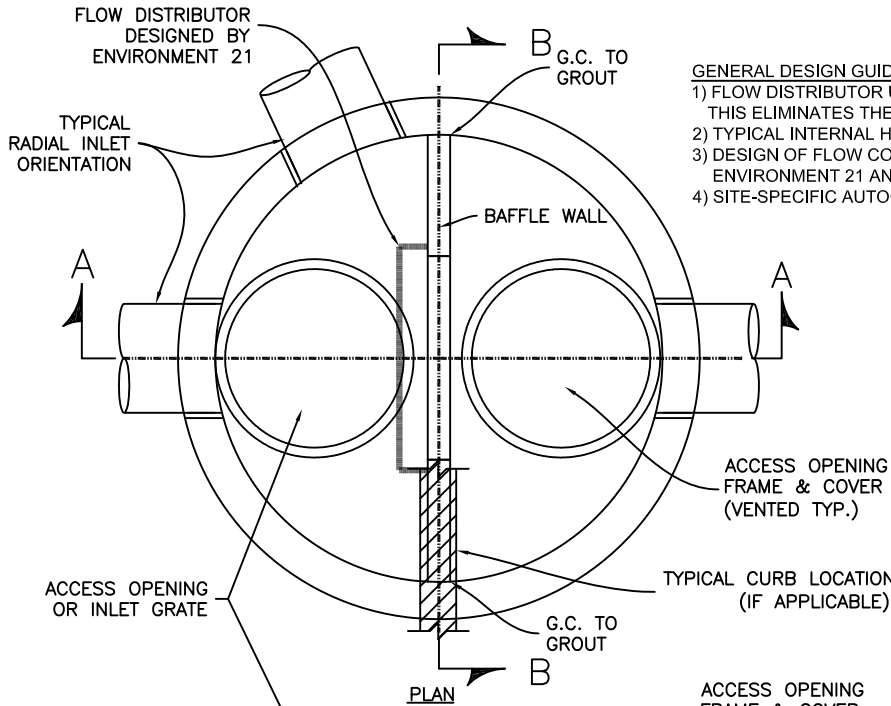
UNISTORM SIZING TABLE						
UNISTORM MODEL #	D (ft.)	MAX. S (ft.)	IMPERVIOUS AREA (acres)	INLET PIPE (in.)	TREATMENT FLOW (cfs)	PEAK FLOW (cfs)
5R	5	5.0±	0 - 3	12-15	0 - 2	6
6R	6	5.3±	3 - 4	18	2 - 3	7
7R	7	5.6±	4 - 6	21	3 - 5	9
8R	8	6.0±	6 - 10	24	5 - 7	16
10R	10	6.6±	10 - 12	30	7 - 10	25
12R	12	7.3±	12 - 15	36	10 - 13	35

GENERAL NOTES:  
 MANHOLE DESIGN SPECIFICATIONS CONFORM TO LATEST ASTM C478 SPEC. FOR PRECAST REINFORCED CONCRETE MANHOLE SECTIONS.

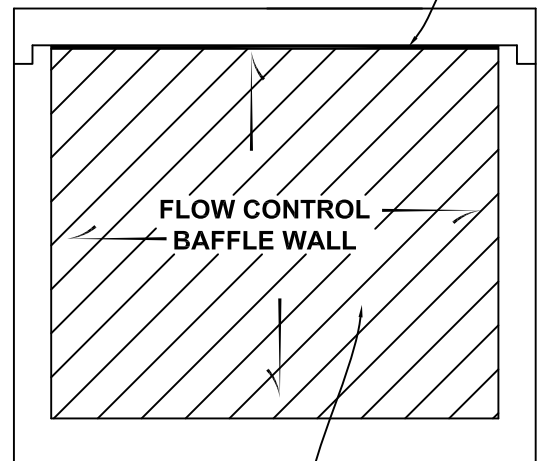
DESIGN LOADING: AASHTO HS20-44

- NOTES:
- 1) RAINFALL INTENSITY USED FOR TREATMENT FLOW = 0.80-1.0 IN/HR
- MANUFACTURING NOTES:
- 1) DESIGN OF INTERNAL BAFFLE WALL PROVIDED TO LICENSED MANUFACTURER BY ENVIRONMENT 21, LLC.
  - 2) LOCATION AND SIZE OF MANHOLE OPENINGS MAY BE ADJUSTED BY LICENSED MANUFACTURER.
  - 3) G.C. TO GROUT INLET AND OUTLET PIPES.

- GENERAL DESIGN GUIDELINES FOR UNISTORM TREATMENT CHAMBER
- 1) FLOW DISTRIBUTOR USED TO DISSIPATE INLET FLOW STIRRING POWER. THIS ELIMINATES THE NEED TO BYPASS HIGH FLOW EVENTS.
  - 2) TYPICAL INTERNAL HEAD LOSS FOR DESIGN STORM IS 0.20 FT.
  - 3) DESIGN OF FLOW CONTROL BAFFLE WALL AND FLOW DISTRIBUTOR BASED ON ENVIRONMENT 21 ANALYSIS OF SITE-SPECIFIC STORM SEWER HYDRAULICS.
  - 4) SITE-SPECIFIC AUTOCAD DRAWING DETAIL PREPARED BY ENVIRONMENT 21 AVAILABLE



GASKET NOTE:  
 GASKET PROVIDED IF TOP OF FLOW CONTROL WALL MUST EXTEND TO CEILING  
 OPTIONAL GASKET



SIZE, SHAPE, AND LOCATION OF FLOW CONTROL OPENINGS BY ENVIRONMENT 21, LLC



New England's Premier Precaster  
 800-696-7432 (SHEA)  
 www.sheaconcrete.com

## UNISTORM ONLINE SYSTEM

773 Salem Street  
 P.O. Box 520  
 Wilmington, MA 01887

87 Haverhill Road  
 P.O. Box 807  
 Amesbury, MA 01913

160 Old Turnpike Road  
 Nottingham, NH 03290

Page: H5.1

ENV21Unistorm.dwg 11/23/2009

