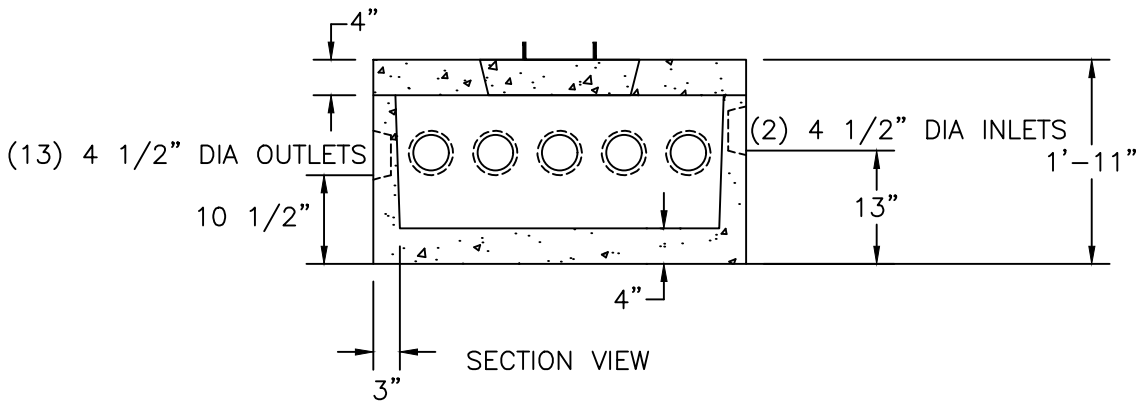



PLAN VIEW



SECTION VIEW

NOTES:

1. CONCRETE: 4,000 PSI MINIMUM AFTER 28 DAYS.
2. DESIGN CONFORMS WITH 310 CMR 15.000, DEP TITLE 5 REGS, FOR DISTRIBUTION BOXES.
3. DESIGNED FOR AASHTO HS-20 LOADING, COVER 1 TO 5 FEET.
4. COVER WEIGHT 463#

SHEA PRODUCT ID: 13DBH	PREPARED FOR:	FILE NAME: Db13out-2.dwg	
WEIGHT (LBS): 1,400#	DRAWN BY: ARO	DATE: 06/01/18	
773 Salem Street-Wilmington, MA   153 Cranberry Hwy-Rochester, MA   87 Haverhill Road-Amesbury, MA   160 Old Turnpike Rd-Nottingham, NH			