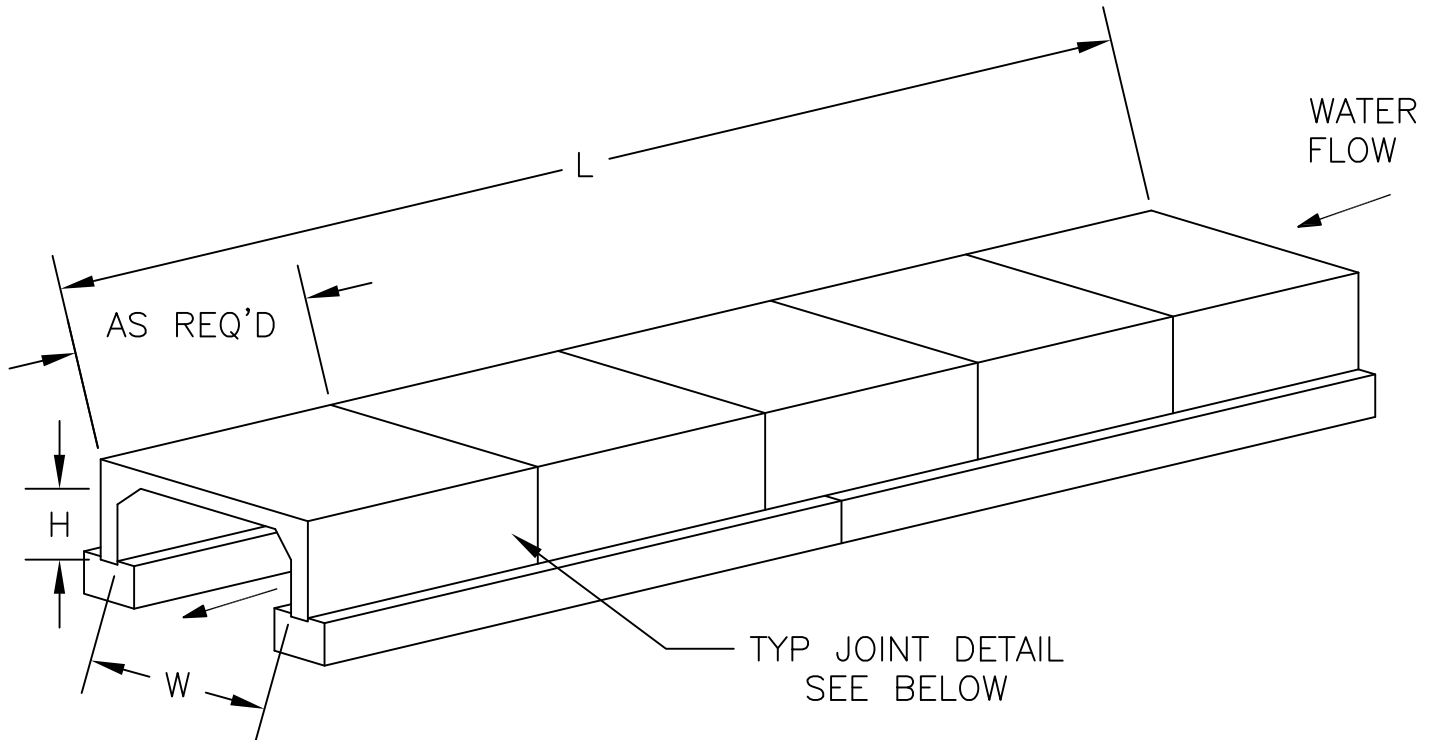
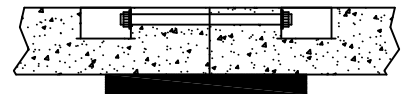


RIGID FRAME
3-SIDED CULVERT

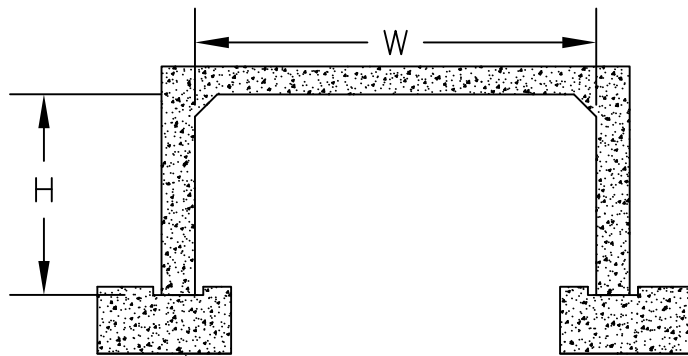


END VIEW

TYP JOINT DETAILS
(SEE NOTE 5)



BOLTED POCKET
+ BUTYL WRAP



PRECAST FOOTINGS (OFFSET)

NOTES:

1. CONCRETE: 5,000 PSI MINIMUM AFTER 28 DAYS.
2. DESIGN PER ASTM C1504 SPECIFICATION FOR 3-SIDED CULVERT.
3. ALL REINFORCEMENT PER ASTM A615.
4. DESIGNED AASHTO HS-20 LOADING OR AS REQUIRED.
5. TONGUE AND GROOVE JOINT SEALED WITH BUTYL WRAP.
6. PRECAST FOOTINGS OPTIONAL

SHEA PRODUCT ID:		PREPARED FOR:		FILE NAME: Culvert 3-Sided.dwg		
WEIGHT (LBS): VARIES		DRAWN BY: ARO		DATE: 08/03/2018		
773 Salem Street-Wilmington, MA 153 Cranberry Hwy-Rochester, MA 87 Haverhill Road-Amesbury, MA 160 Old Turnpike Rd-Nottingham, NH						