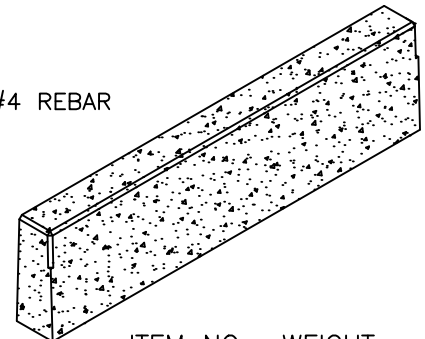
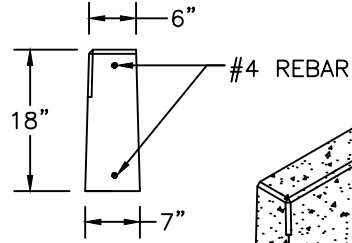
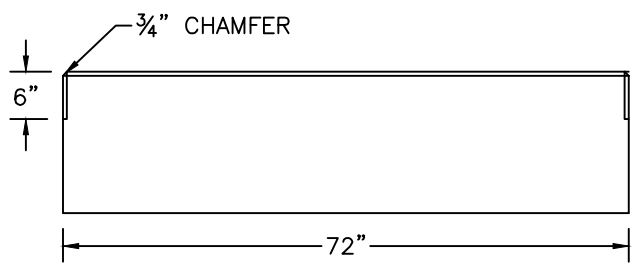


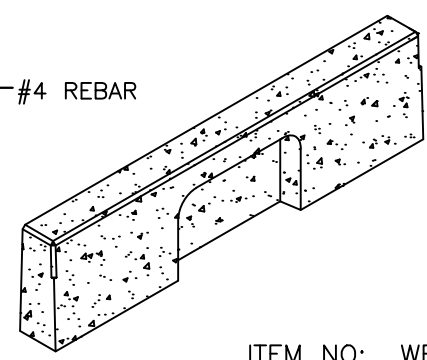
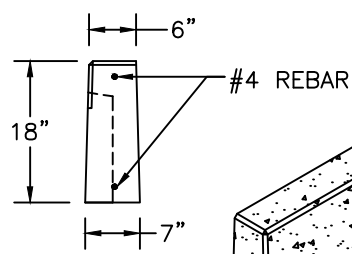
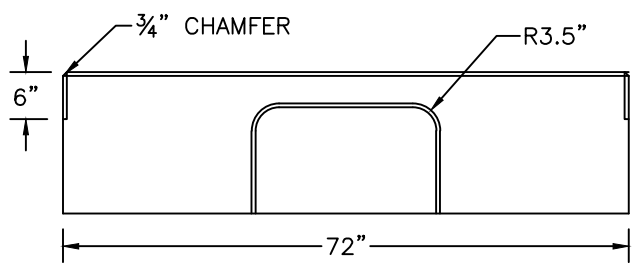
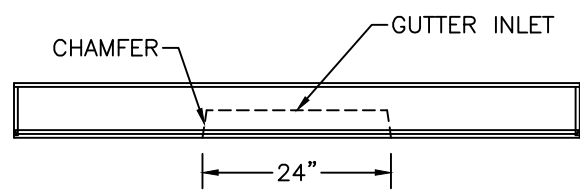
ITEM NO:	WEIGHT
C3S	389#

3' CURBING - STRAIGHT



ITEM NO:	WEIGHT
C6S	778#

6' CURBING - STRAIGHT



ITEM NO:	WEIGHT
C6SGI	677#

6' CURBING - GUTTER INLET

NOTES:

1. CONCRETE: 5,000 PSI MINIMUM AFTER 28 DAYS